

Anti-Alpha Tubulin Antibody [Clone 82-1]

| | |
|-----------------------|----------------------------------|
| Catalog Number | LDG0002YC |
| Package | Customized package / 100 μ L |

For full product information, images and publications, please visit [our website](#).



Overview

Description

Tubulin is the major building block of microtubules. Tubulin is a heterodimer that consist of alpha-tubulin and beta-tubulin. Both subunit have molecular weight of 50 kDa.

Product Note

Recommended dilution factor:

ELISA: 1:5000-20000

WB: 1:1000-10000

IFA: 1:200-1000

Note: Working dilution for specific application should be determined by the investigator to obtain the best conditions.

Specifications

Host

Mouse

Clonality

Monoclonal

Isotype

IgG2a

Clone Name

clone 82-1

Immunogen

Recombinant alpha tubulin protein

Reactivity

Mouse, Human, Hamster, Monkey

Application

ELISA, WB, IFA

Conjugation

Unconjugated

Concentration

Lot-dependent, please refer to product label.

Specificity

Alpha tubulin protein

Storage Buffer

Phosphate Buffered Saline containing 0.03% ProClin 300, pH 7.4.

Form

Liquid

Instruction**Shipping**

The product is shipped with polar packs. Upon receipt, store it immediately at -20°C or lower for long term storage.

Stability & Storage

This product is stable after storage at:

- 2-8°C for 2 weeks under sterile conditions from date of receipt.
- -20°C or -80°C for 12 months under sterile conditions from date of receipt.

Avoid repeated freeze/thaw cycles.

Suggestion: Divide antibody into several vials. Keep only vials for usage at 2-8°C.

Image**Tainan Headquarters**

+886-6-2536677

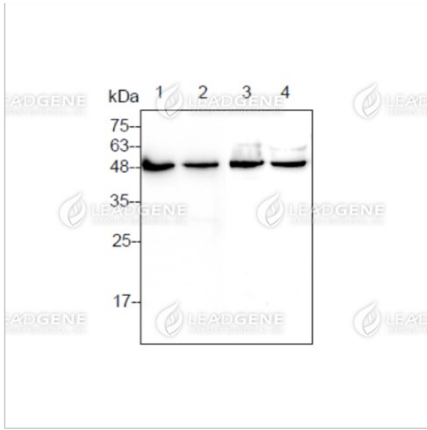
bd@leadgene.com.tw

Innovation & Research Center

+886-2-27065528

CLD Center

+886-6-2536677



Western blotting analysis of anti-alpha tubulin mAb (1:2000)

Lane 1: 3T3 cell lysate

Lane 2: 293T cell lysate

Lane 3: BHK cell lysate

Lane 4: Vero cell lysate

Lysate/proteins at 30 per lane

Disclaimer : For Research Use or Further Manufacturing Only.