

## Anti-DENV E Antibody [Clone 102-1]

**Catalog Number** LDG0011YA

**Package** 100 µg / Customized package

For full product information, images and publications, please visit [our website](#).



### Overview

#### Description

Dengue virus belongs to the family Flaviviridae, genus Flavivirus and consists of four distinct serotypes (DENV1 to 4). Dengue virus is transmitted by mosquitos majorly of species Aedes aegypti and Aedes Albopictus that widespread around tropics and subtropics. The Envelope protein is the major surface-exposed antigen and the primary target of the humoral immune response, and thus the focus of vaccine design.

#### Product Note

Recommended dilution factor:

ELISA: 1:5000-20000

WB: 1:1000-5000

IFA: 1:500-1000

FACS: Assay dependent

Note: Working dilution for specific application should be determined by the investigator to obtain the best conditions.

### Specifications

#### Host

Mouse

#### Clonality

Monoclonal

#### Isotype

IgG1

#### Clone Name

clone 102-1

#### Immunogen

Dengue virus E

#### Reactivity

Dengue virus

#### Tainan Headquarter

+886-6-2536677

bd@leadgene.com.tw

#### Innovation & Research Center

+886-2-27065528

#### CLD Center

+886-6-2536677

**Application**

ELISA, WB, IFA, FACS

**Concentration**

1 mg/mL

**Specificity**

E (envelope) protein

**Conjugation**

Unconjugated

**Storage Buffer**

Phosphate Buffered Saline containing 0.03% ProClin 300, pH 7.4.

**Form**

Liquid

**Instruction****Shipping**

The product is shipped with polar packs. Upon receipt, store it immediately at -20°C or lower for long term storage.

**Stability & Storage**




This product is stable after storage at:

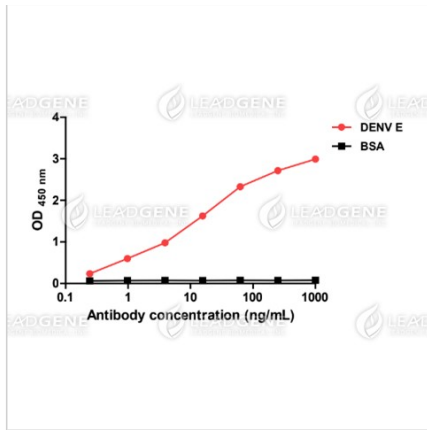
- 2-8°C for 2 weeks under sterile conditions from date of receipt.
- -20°C or -80°C for 12 months under sterile conditions from date of receipt.

Avoid repeated freeze/thaw cycles.

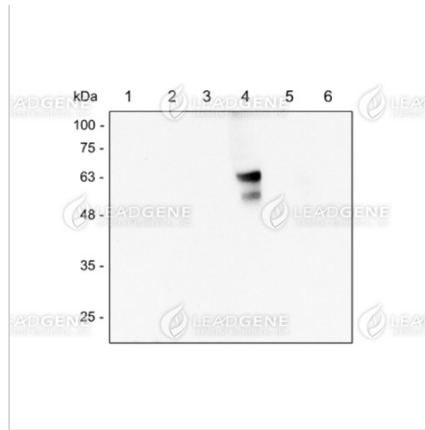
Suggestion: Divide antibody into several vials.

Keep only vials for usage at 2-8°C.

**Image****Tainan Headquarter** +886-6-2536677 bd@leadgene.com.tw**Innovation & Research Center** +886-2-27065528**CLD Center** +886-6-2536677



ELISA titration of DENV E antibody



Western blotting analysis of DENV E antibody (1:1000)

Lane 1: Vero cell lysate

Lane 2: ZIKV-infected Vero cell lysate

Lane 3: DENV1-infected Vero cell lysate

Lane 4: DENV2-infected Vero cell lysate

Lane 5: DENV3-infected Vero cell lysate

Lane 6: DENV4-infected Vero cell lysate

**Disclaimer :** For Research Use or Further Manufacturing Only.