

## Anti-ZIKV NS1 Antibody [Clone ZK51]

<b>Catalog Number</b>	LDG0015YA
<b>Package</b>	100 µg / 200 µg / Customized package

For full product information, images and publications, please visit [our website](#).



### Overview

#### Description

Zika virus belongs to the family Flaviviridae, genus Flavivirus. Zika virus is transmitted primarily by mosquitos, but also can be transmitted through sexual, vertical, and blood transfusion. NS1 is a highly-conserved viral protein in flaviviruses. In infected patients, the concentration of NS1 protein in circulating blood is relatively high, and can be detected up to 5 days after the onset of illness.

#### Product Note

Recommended dilution factor:

ELISA: 1:5000-20000

WB: 1:1000-5000

IFA: 1:500-1000

FACS: Assay dependent

Note: Working dilution for specific application should be determined by the investigator to obtain the best conditions.

### Specifications

#### Host

Mouse

#### Isotype

IgG1

#### Immunogen

Zika virus NS1

#### Clonality

Monoclonal

#### Clone Name

clone ZK51

#### Reactivity

Zika virus

**Application**

ELISA, WB, IFA

**Concentration**

1 mg/mL

**Specificity**

NS1

**Conjugation**

Unconjugated

**Storage Buffer**

Phosphate Buffered Saline containing 0.03% ProClin 300, pH 7.4.

**Form**

Liquid

**Instruction****Shipping**

The product is shipped with polar packs. Upon receipt, store it immediately at -20°C or lower for long term storage.

**Stability & Storage**




This product is stable after storage at:

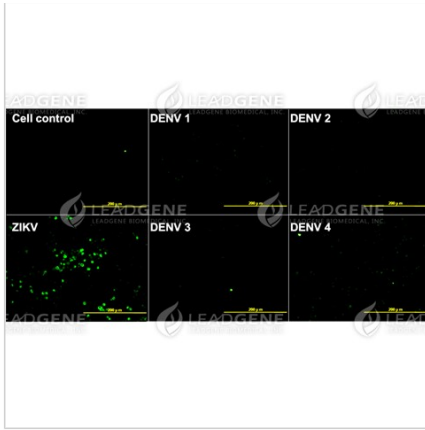
- 2-8°C for 2 weeks under sterile conditions from date of receipt.
- -20°C or -80°C for 12 months under sterile conditions from date of receipt.

Avoid repeated freeze/thaw cycles.

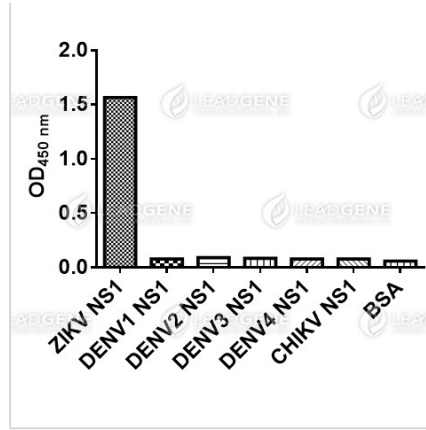
Suggestion: Divide antibody into several vials.

Keep only vials for usage at 2-8°C.

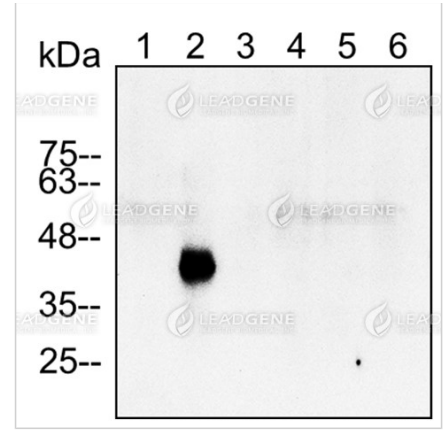
**Image****Tainan Headquarter** +886-6-2536677 [bd@leadgene.com.tw](mailto:bd@leadgene.com.tw)**Innovation & Research Center** +886-2-27065528**CLD Center** +886-6-2536677



Immunofluorescence analysis of Anti-ZIKV NS1 Antibody [Clone ZK51]  
ZIKV NS1 mAb (1:400) were used for detecting ZIKV NS1 in IFA.  
Scale bar: 200  $\mu$ m



ELISA assay of Anti-ZIKV NS1 Antibody [Clone ZK51]  
Indirect ELISA analysis was performed by coating a plate with recombinant NS1 protein of ZIKV, CHIKV or DENV and probing with anti-ZIKV NS1 Antibody.



Western blotting analysis of Anti-ZIKV NS1 Antibody [Clone ZK51]  
Western blot: Virus infection Vero cell lysates were stained with mouse anti-ZIKV NS1 monoclonal antibody at 1:2000 dilution. Lane 1: Vero mock cell lysate (10  $\mu$ g), Lane 2: Vero ZIKV cell lysate (10  $\mu$ g), Lane 3: Vero DENV1 cell lysate (10  $\mu$ g), Lane 4: Vero DENV2 cell lysate (10  $\mu$ g), Lane 5: Vero DENV3 cell lysate (10  $\mu$ g), Lane 6: Vero DENV 4 cell lysate (10  $\mu$ g).

**Disclaimer :** For Research Use or Further Manufacturing Only.