

Mouse M-CSF, His Tag, E. coli

Catalog Number	LDG001PME
Package	5 µg / 20 µg / 100 µg / Customized package

For full product information, images and publications, please visit [our website](#).



Specifications

Species of Origin

Mouse

Affinity Tag

His Tag (C-term)

Purity

>98% as determined by SDS-PAGE analysis.

Activity

Measure by its ability to induce proliferation in NFS-60 cells. The ED₅₀ for this effect is < 6 ng/mL.

Form

Lyophilized

Expression System

Escherichia coli

Storage Buffer

Lyophilized from a 0.2 µm filtered solution of PBS, pH 8.0.

Molecular weight

The protein has a calculated MW of 19.02 kDa. The protein migrates as 17-25 kDa under reducing condition (SDS-PAGE analysis).

Endotoxin Level

<0.1 EU per 1 µg of the protein by the LAL method.

Background

Tainan Headquarter

+886-6-2536677

bd@leadgene.com.tw

Innovation & Research Center

+886-2-27065528

CLD Center

+886-6-2536677

Background

Macrophage Colony-Stimulating Factor (M-CSF) is a 19.02 kDa hematopoietic Growth Factors with 162 amino acid residues. The active form of the protein is homodimer, and secreted by osteoblasts. M-CSF controls the production, differentiation, and function of monocytes, macrophages, and bone marrow progenitor cells. M-CSF is able to activate CSF-1 signaling pathway via binding its receptor CSF-1R.

Uniprot ID

#P07141

Synonyms

Macrophage colony-stimulating factor 1, CSF-1, MCSF

Sequence Note

Lys33-Pro187

Instruction

Reconstitution

It is recommended to reconstitute the lyophilized protein in sterile H₂O to a concentration not less than 200 µg/mL and incubate the stock solution for at least 20 min to ensure sufficient re-dissolved.

Stability & Storage

This product is stable after storage at:

- -20°C for 12 months in lyophilized state from date of receipt.
- -20°C or -80°C for 2 weeks under sterile conditions after reconstitution.

Avoid repeated freeze/thaw cycles.

Shipping

The product is shipped with polar packs. Upon receipt, store it immediately at -20°C or lower for long term storage.

Image

Tainan Headquarter

+886-6-2536677

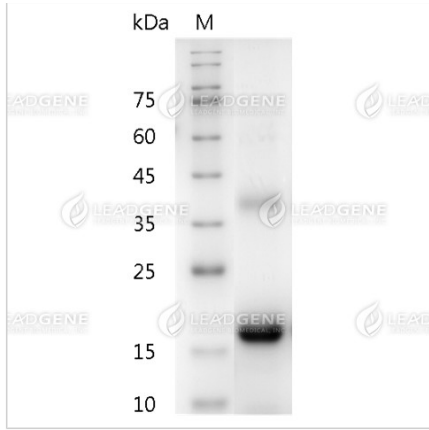
bd@leadgene.com.tw

Innovation & Research Center

+886-2-27065528

CLD Center

+886-6-2536677



SDS-PAGE analysis of
recombinant mouse M-CSF.

Disclaimer : For Research Use or Further Manufacturing Only.