

## ZIKV E Protein, His Tag, E. coli

<b>Catalog Number</b>	LDG001PVE
<b>Package</b>	5 µg / 20 µg / 100 µg / 1 mg / Customized package

For full product information, images and publications, please visit [our website](#).



### Specifications

#### Species of Origin

Zika virus

#### Affinity Tag

His Tag (C-term)

#### Purity

>98% as determined by SDS-PAGE analysis.

#### Form

Lyophilized

#### Expression System

Escherichia coli

#### Storage Buffer

Lyophilized from a 0.2 µm filtered solution of PBS, pH 8.0.

#### Molecular weight

The protein has a calculated MW of 55.03 kDa. The protein migrates as 48-63 kDa under reducing condition (SDS-PAGE analysis).

### Background

#### Tainan Headquarter

+886-6-2536677

bd@leadgene.com.tw

#### Innovation & Research Center

+886-2-27065528

#### CLD Center

+886-6-2536677

### Background

Zika virus (ZIKV), a member of Flaviviridae family, is an emerging disease that is spread by Aedes mosquitoes. ZIKV is composed of a single polyprotein that is cleaved into three structural proteins: capsid (C), precursor of membrane (prM), envelop (E) and seven non-structural proteins: NS1, NS2A, NS2B, NS3, NS4A, NS4B and NS5. ZIKV E protein is containing 501 amino acids with polyhistidine tag at the C-terminus. ZIKV E protein composes the majority of the virion surface and it is involved with replication, such as host cell binding and membrane fusion.

### Uniprot ID

#Q32ZE1

### Synonyms

Genome polyprotein

### Sequence Note

Ile291-Ala790

## Instruction

### Reconstitution

It is recommended to reconstitute the lyophilized protein in sterile H<sub>2</sub>O to a concentration not less than 200 µg/mL and incubate the stock solution for at least 20 min to ensure sufficient re-dissolved.

### Stability & Storage

This product is stable after storage at:

- -20°C for 12 months in lyophilized state from date of receipt.
- -20°C or -80°C for 1 month under sterile conditions after reconstitution.

Avoid repeated freeze/thaw cycles.

### Shipping

The product is shipped with polar packs. Upon receipt, store it immediately at -20°C or lower for long term storage.

## Image

### Tainan Headquarter

+886-6-2536677

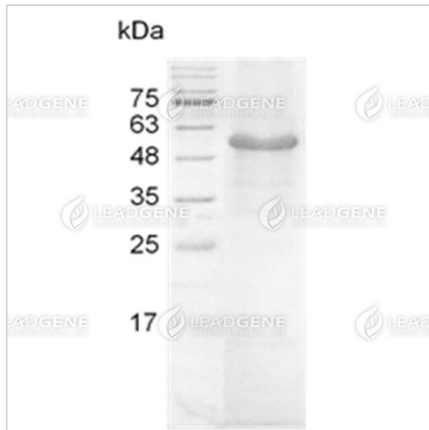
bd@leadgene.com.tw

### Innovation & Research Center

+886-2-27065528

### CLD Center

+886-6-2536677



SDS-PAGE analysis of recombinant ZIKV E protein.

**Disclaimer :** For Research Use or Further Manufacturing Only.