

## Swine CXCL9, His Tag, E. coli

|                       |  |
|-----------------------|--|
| <b>Catalog Number</b> | LDG002PSE                                  |
| <b>Package</b>        | 5 µg / 20 µg / 100 µg / Customized package |

For full product information, images and publications, please visit [our website](#).



### Specifications

#### Species of Origin

Swine

#### Affinity Tag

His Tag (N-term)

#### Purity

>98% as determined by SDS-PAGE analysis.

#### Endotoxin Level

<0.1 EU per 1 µg of the protein by the LAL method.

#### Expression System

Escherichia coli

#### Storage Buffer

Lyophilized from a 0.2 µm filtered solution of PBS, pH 7.4.

#### Molecular weight

The protein has a calculated MW of 12.88 kDa. The protein migrates as 17-25 kDa under reducing condition (SDS-PAGE analysis).

#### Form

Lyophilized

### Background

#### Tainan Headquarter

+886-6-2536677

bd@leadgene.com.tw

#### Innovation & Research Center

+886-2-27065528

#### CLD Center

+886-6-2536677

### Background

C-X-C motif chemokine 9 (CXCL9) also named monokine induced by gamma interferon (MIG), which is a chemokine of the intercrine alpha family. CXCL9 is a 11.5 kDa protein containing 104 amino acid residues. CXCL9 controls the immune cells by binding the CXCR3 which is including the cell migration and activation. During inflammation, CXCL9 is a chemotaxis for lymphocyte and macrophages. CXCL9 is participated in the process of tumor proliferation and metastasis.

### Sequence Note

Thr23-Thr126

### Uniprot ID

#NP\_001107761.2

## Instruction

### Reconstitution

It is recommended to reconstitute the lyophilized protein in sterile H<sub>2</sub>O to a concentration not less than 200 µg/mL and incubate the stock solution for at least 20 min to ensure sufficient re-dissolved.

### Stability & Storage

This product is stable after storage at:

- -20°C for 12 months in lyophilized state from date of receipt.
- -20°C or -80°C for 1 month under sterile conditions after reconstitution.

Avoid repeated freeze/thaw cycles.

### Shipping

The product is shipped with polar packs. Upon receipt, store it immediately at -20°C or lower for long term storage.

## Image

### Tainan Headquarter

+886-6-2536677

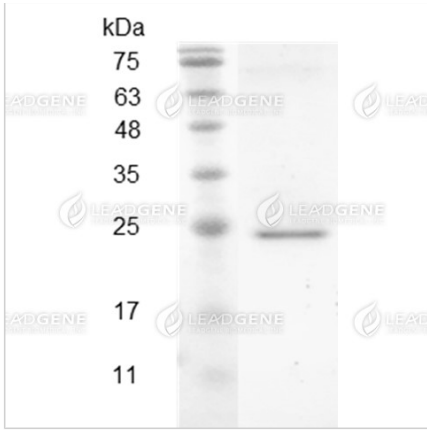
bd@leadgene.com.tw

### Innovation & Research Center

+886-2-27065528

### CLD Center

+886-6-2536677



SDS-PAGE analysis of recombinant swine CXCL9.

**Disclaimer :** For Research Use or Further Manufacturing Only.