

SARS-CoV-2 Virus-Like Particles

Catalog Number LDG002PVM

Package 100 µg / Customized package

For full product information, images and publications, please visit [our website](#).



Specifications

Species of Origin

SARS-CoV-2

Concentration

1 mg/mL

Molecular weight

Purified SARS-CoV-2 VLPs was analyzed migrates about 180 kDa under reducing condition, using Mouse anti-SARS-CoV-2 Spike mAb, clone LGSV201. (Western blot)

Purified SARS-CoV-2 VLPs was analyzed migrates as 46-63 kDa under reducing condition, using Anti-SARS-CoV-2 NP polyclonal antibody. (Western blot)

Expression System

HEK293

Storage Buffer

Liquid. Phosphate buffered saline, pH 7.4.

Form

Liquid

Background

Background

SARS-CoV-2 virus-like particles are composed of four structural proteins: Membrane protein (M), Nucleocapsid protein (N), Spike protein (S) and Envelope protein (E). VLPs are produced in mammalian HEK293 cells.

Instruction

Shipping

The product is shipped with polar packs. Upon receipt, store it immediately at -80°C or lower for long term storage.

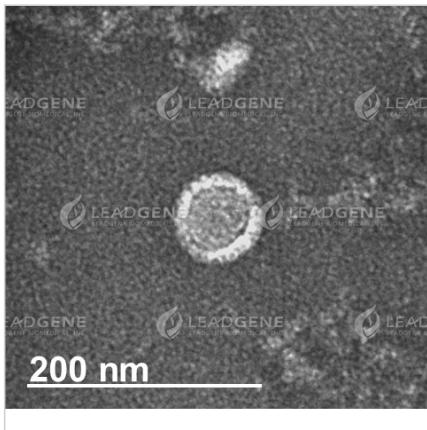
Stability & Storage

This product is stable after storage at:

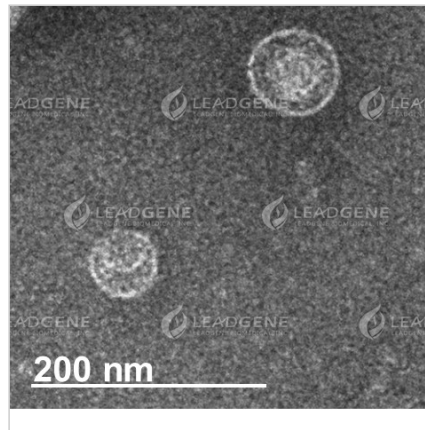
- -80°C for long-term storage under sterile conditions.

Avoid repeated free-thaw cycles. Thaw quickly using a 37°C water bath immediately before use.

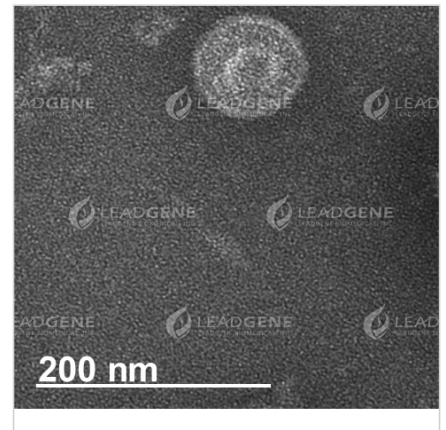
Image



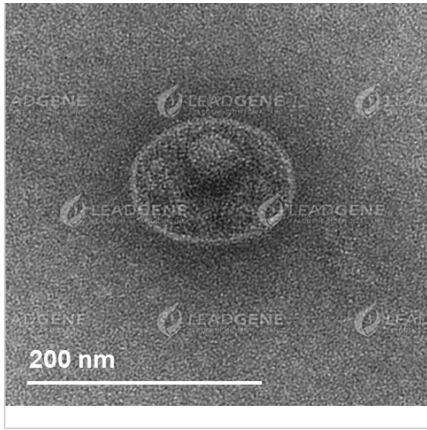
Representative TEM images of SARS-CoV-2 Virus-Like Particles. The VLP size and morphology were assessed by negatively stained transmission electron microscopy (TEM). The scale bar is 200 nm.



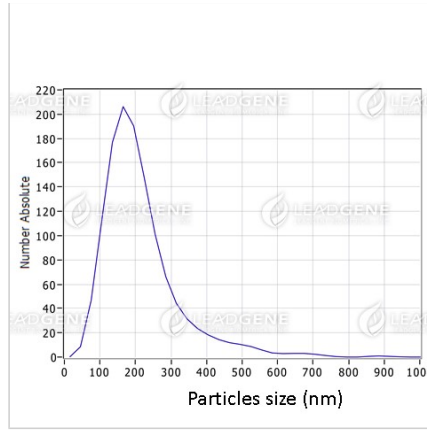
Representative TEM images of SARS-CoV-2 Virus-Like Particles. The VLP size and morphology were assessed by negatively stained transmission electron microscopy (TEM). The scale bar is 200 nm.



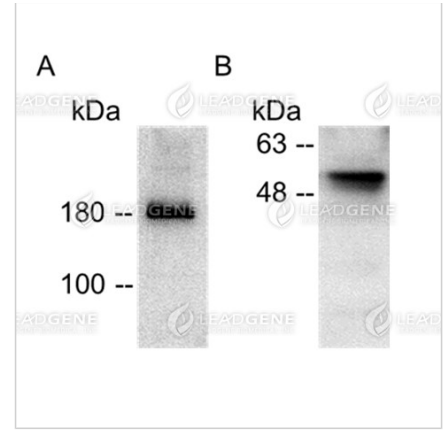
Representative TEM images of SARS-CoV-2 Virus-Like Particles. The VLP size and morphology were assessed by negatively stained transmission electron microscopy (TEM). The scale bar is 200 nm.



Representative TEM images of SARS-CoV-2 Virus-Like Particles. The VLP size and morphology were assessed by negatively stained transmission electron microscopy (TEM). The scale bar is 200 nm.



Nanoparticle tracking analysis of SARS-CoV-2 Virus-Like Particles. The nanoparticle tracking analysis (NTA) data revealed particle size distribution, and average concentrations was $1.0E+10$ particles / mL.



Purified SARS-CoV-2 VLPs were analyzed by Western blot using (A) Mouse anti-SARS-CoV-2 Spike mAb, clone LGSV201 (Cat. 18100) and (B) Anti-SARS-CoV-2 NP polyclonal antibody.

Disclaimer : For Research Use or Further Manufacturing Only.