

Anti-IL-10 Antibody [Clone 17-1]

Catalog Number LDG0031YA

Package 100 µg / Customized package

For full product information, images and publications, please visit [our website](#).



Overview

Description

Interleukin-10 family is a group of cytokine, maintains tissue homeostasis during infection and inflammation. IL-10, a member of the IL-10 family, is an anti-inflammatory cytokine has pleiotropic effects in immunoregulation and inflammation, produced primarily by monocytes. IL-10 is also known as cytokine synthesis inhibitory factor (CSIF), plays an essential role in preventing inflammatory and autoimmune pathologies.

Product Note

Recommended dilution factor:

ELISA: 1:5000-20000

WB: 1:1000-5000

IFA: 1:200-1000

FACS: Assay dependent

Note: Working dilution for specific application should be determined by the investigator to obtain the best conditions.

Specifications

Host

Mouse

Isotype

IgG1

Immunogen

Interleukin 10

Clonality

Monoclonal

Clone Name

clone 17-1

Reactivity

Human

Application

ELISA, WB, IFA, FACS

Concentration

1 mg/mL

Specificity

Interleukin 10

Conjugation

Unconjugated

Storage Buffer

Phosphate Buffered Saline containing 0.03% ProClin 300, pH 7.4.

Form

Liquid

Instruction**Shipping**

The product is shipped with polar packs. Upon receipt, store it immediately at -20°C or lower for long term storage.

Stability & Storage




This product is stable after storage at:

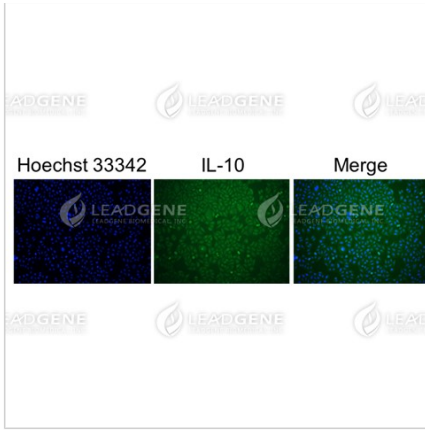
- 2-8°C for 2 weeks under sterile conditions from date of receipt.
- -20°C or -80°C for 12 months under sterile conditions from date of receipt.

Avoid repeated freeze/thaw cycles.

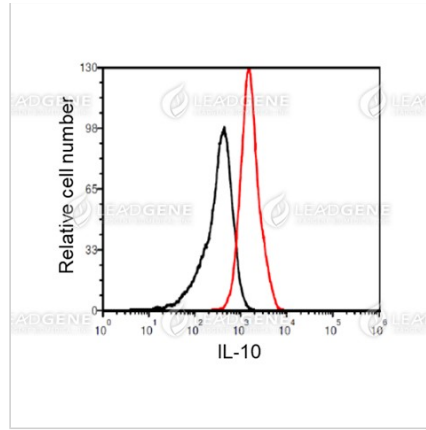
Suggestion: Divide antibody into several vials.

Keep only vials for usage at 2-8°C.

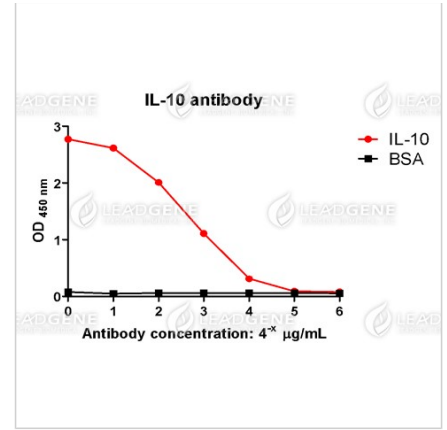
Image**Tainan Headquarter** +886-6-2536677 bd@leadgene.com.tw**Innovation & Research Center** +886-2-27065528**CLD Center** +886-6-2536677



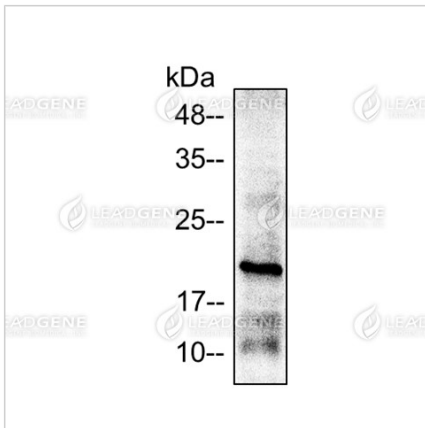
Immunofluorescence analysis of Anti-IL-10 Antibody [Clone 17-1] HeLa cells were fixed in 4% PFA, permeabilized with PBS containing 0.1% Triton X-100. Cells were stained with mouse anti-IL-10 monoclonal antibody (1:200) followed by secondary antibodies (goat anti-Mouse IgG-iFluor 488, 1:400, green) and cell nuclei were stained with Hoechst 33342 (Blue).



FACS analysis of Anti-IL-10 Antibody [Clone 17-1] Ramos cells were stained with mouse anti-IL-10 monoclonal antibody at 2 $\mu\text{g}/\text{mL}$ (red) and without antibody control (black).



ELISA titration of Anti-IL-10 Antibody [Clone 17-1] Titration curve of anti-IL-10 antibody in ELISA. Red: IL-10; Black: BSA (negative control).



Western blotting analysis of Anti-IL-10 Antibody [Clone 17-1] Hela cell lysates (30 μg) were stained with mouse anti-IL-10 monoclonal antibody [Clone 17-1] at 1:5000 dilution.

Disclaimer : For Research Use or Further Manufacturing Only.

Tainan Headquarter

+886-6-2536677

bd@leadgene.com.tw

Innovation & Research Center

+886-2-27065528

CLD Center

+886-6-2536677