

Anti-CXCL12 Antibody [Clone 69-2]

Catalog Number	LDG0041YA
Package	100 µg / Customized package

For full product information, images and publications, please visit [our website](#).



Overview

Description

The CXC chemokine is a group of secreted proteins, attracts neutrophils and lymphocytes. CXC chemokine ligand 12 (CXCL12 or Stromal cell-derived factor 1, SDF-1), a member of the CXC chemokines, exists in three alternative splicing variants (α , β and γ). This chemokine plays a crucial role in embryogenesis, hematopoiesis, angiogenesis and inflammation. CXCL12 is the only chemokine ligand for CXCR4, this ligand-receptor pair is essential during embryogenesis, hematopoiesis, and immune system organization.

Product Note

Recommended dilution factor:

ELISA: 1:5000-20000

WB: 1:1000-10000

IFA: 1:200-1000

FACS: Assay dependent

Note: Working dilution for specific application should be determined by the investigator to obtain the best conditions.

Specifications

Host	Clonality
Mouse	Monoclonal
Isotype	Clone Name
IgG2a	clone 69-2
Immunogen	Reactivity
CXCL12	Human

Tainan Headquarters

+886-6-2536677

bd@leadgene.com.tw

Innovation & Research Center

+886-2-27065528

CLD Center

+886-6-2536677

Application

ELISA, WB, IFA, FACS

Concentration

1 mg/mL

Specificity

CXCL12

Conjugation

Unconjugated

Storage Buffer

Phosphate Buffered Saline containing 0.03% ProClin 300, pH 7.4.

Form

Liquid

Instruction**Shipping**

The product is shipped with polar packs. Upon receipt, store it immediately at -20°C or lower for long term storage.

Stability & Storage

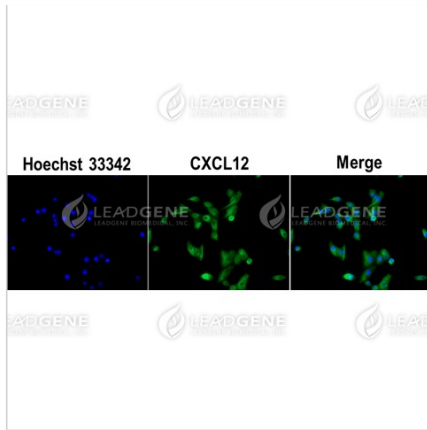
This product is stable after storage at:

- 2-8°C for 2 weeks under sterile conditions from date of receipt.
- -20°C or -80°C for 12 months under sterile conditions from date of receipt.

Avoid repeated freeze/thaw cycles.

Suggestion: Divide antibody into several vials. Keep only vials for usage at 2-8°C.

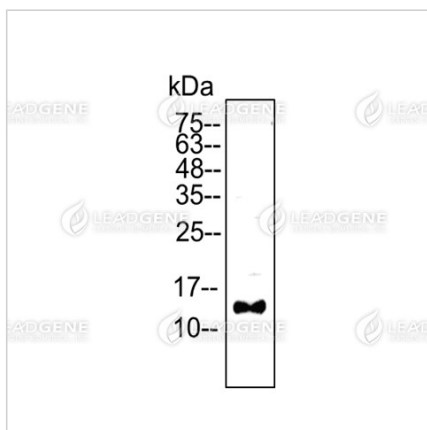
Image**Tainan Headquarters** +886-6-2536677 bd@leadgene.com.tw**Innovation & Research Center** +886-2-27065528**CLD Center** +886-6-2536677



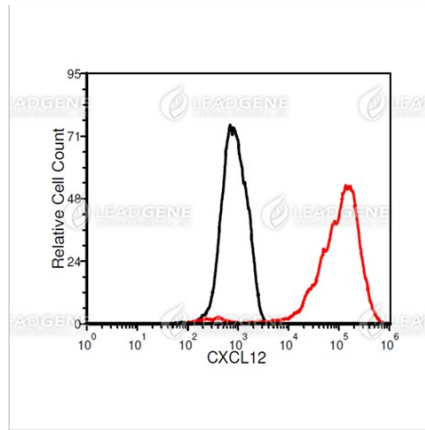
Immunofluorescence analysis of Anti-CXCL12 Antibody [Clone 69-2]
 A549 cells were fixed in 4% PFA, permeabilized with PBS containing 0.1% Triton X-100. Cells were stained with mouse anti-CXCL12 monoclonal

antibody (1:200) followed by secondary antibodies (goat anti-Mouse IgG-iFluor 488, 1:400, green) and cell nuclei were stained with Hoechst 33342

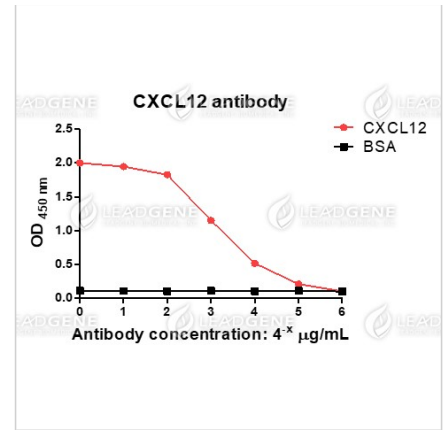
(Blue).



Western blotting analysis of Anti-CXCL12 Antibody [Clone 69-2]
 HeLa cell lysates (30 µg) were stained with mouse anti-CXCL12 monoclonal antibody at 1:5000 dilution.





FACS analysis of Anti-CXCL12 Antibody [Clone 69-2]
 A549 cells were stained with mouse anti-CXCL12 monoclonal antibody at 2 µg/ml (red) and without antibody control (black).



ELISA titration of Anti-CXCL12 Antibody [Clone 69-2]
 Titration curve of anti-CXCL12 antibody in ELISA. Red: CXCL12; Black: BSA (negative control).

Disclaimer : For Research Use or Further Manufacturing Only.

Tainan Headquarters +886-6-2536677 bd@leadgene.com.tw**Innovation & Research Center** +886-2-27065528**CLD Center** +886-6-2536677