

## Anti-TGF Beta 1 Antibody [Clone 51-3]

**Catalog Number** LDG0047YA

**Package** 100 µg / Customized package

For full product information, images and publications, please visit [our website](#).



### Overview

#### Description

Transforming growth factor beta (TGF-β), a polypeptide member of the transforming growth factor beta superfamily of cytokines that includes three isoforms, is involved in various biological processes. TGF-β1, the most abundant TGF-β isoform, is a secreted protein that plays important role in cell proliferation, differentiation and apoptosis and is involved in wound healing, inflammatory processes and prevention of tumor growth.

#### Product Note

Recommended dilution factor:

ELISA: 1:5000-20000

WB: 1:1000-10000

IFA: 1:400-1000

FACS: Assay dependent

Note: Working dilution for specific application should be determined by the investigator to obtain the best conditions.

### Specifications

#### Host

Mouse

#### Isotype

IgG1

#### Immunogen

TGF Beta 1

#### Clonality

Monoclonal

#### Clone Name

clone 51-3

#### Reactivity

Human

**Application**

ELISA, WB, IFA, FACS

**Concentration**

1 mg/mL

**Specificity**

TGF Beta 1

**Conjugation**

Unconjugated

**Storage Buffer**

Phosphate Buffered Saline containing 0.03% ProClin 300, pH 7.4.

**Form**

Liquid

**Instruction****Shipping**

The product is shipped with polar packs. Upon receipt, store it immediately at -20°C or lower for long term storage.

**Stability & Storage**




This product is stable after storage at:

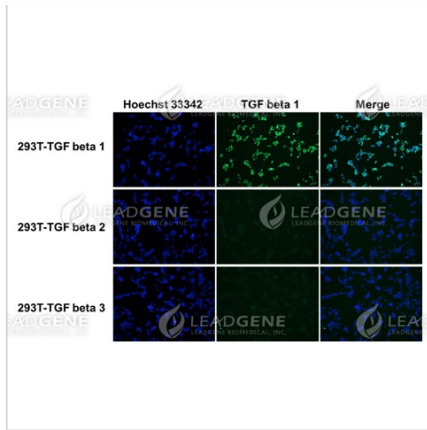
- 2-8°C for 2 weeks under sterile conditions from date of receipt.
- -20°C or -80°C for 12 months under sterile conditions from date of receipt.

Avoid repeated freeze/thaw cycles.

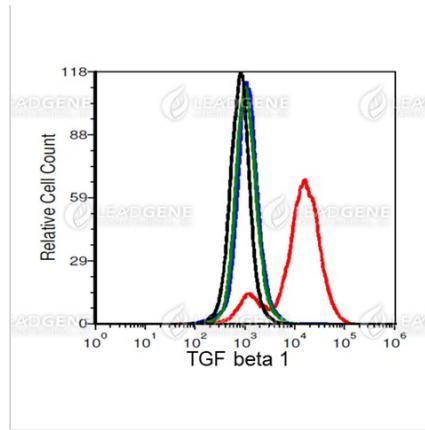
Suggestion: Divide antibody into several vials.

Keep only vials for usage at 2-8°C.

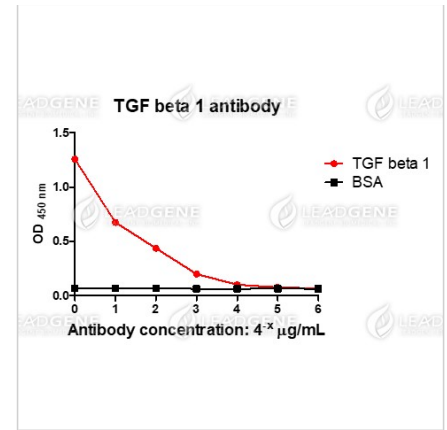
**Image****Tainan Headquarter** +886-6-2536677 [bd@leadgene.com.tw](mailto:bd@leadgene.com.tw)**Innovation & Research Center** +886-2-27065528**CLD Center** +886-6-2536677



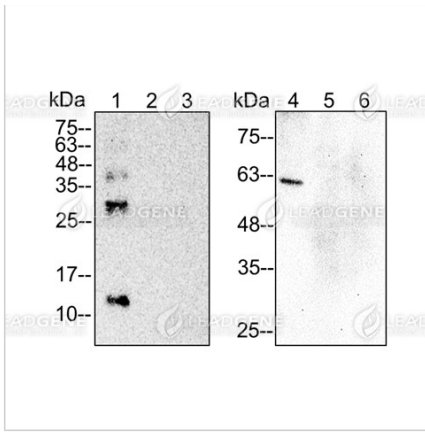
Immunofluorescence analysis of Anti-TGF Beta 1 Antibody [Clone 51-3]  
 293T cells were respectively transfected with TGF beta 1, beta 2 and beta 3 plasmid and fixed in 4% PFA, permeabilized with PBS containing 0.1% Triton X-100. Cells were stained with mouse anti-TGF beta 1 monoclonal antibody (1:400) followed by secondary antibodies (goat anti-Mouse IgG-iFluor 488, 1:400, green) and cell nuclei were stained with Hoechst 33342 (Blue).



FACS analysis of Anti-TGF Beta 1 Antibody [Clone 51-3]  
 293T cells (black) were respectively transfected with TGF beta 1 (red), beta 2 (blue) and beta 3 (green) plasmid and stained with mouse anti-TGF beta 1 monoclonal antibody at 1 µg/ml.



ELISA titration of Anti-TGF Beta 1 Antibody [Clone 51-3]  
 Titration curve of anti-TGF beta 1 antibody in ELISA. Red: TGF beta 1; Black: BSA (negative control).



Western blotting analysis of Anti-TGF Beta 1 Antibody [Clone 51-3] Recombinant proteins and TGF beta 1, 2 or 3 transfected 293T cell lysates

were stained with mouse anti-TGF beta 1 monoclonal antibody at 1:2000

dilution. Lane 1: recombinant TGF beta 1 protein (25 ng). Lane 2: recombinant TGF beta 2 protein (25 ng). Lane 3: recombinant TGF beta 3 protein (25 ng). Lane 4: TGF beta 1 transfected 293T cell lysates (30  $\mu$ g).

Lane 5: TGF beta 2 transfected 293T cell lysates (30  $\mu$ g). Lane 6: TGF beta 3 transfected 293T cell lysates (30  $\mu$ g).

**Disclaimer :** For Research Use or Further Manufacturing Only.