

## Anti-HBV PreS1 Antibody [Clone S101]

**Catalog Number** LDG0050YA

**Package** 100 µg / Customized package

For full product information, images and publications, please visit [our website](#).



### Overview

#### Description

Hepatitis B virus (HBV) is the major pathogenic factor for inducing acute, chronic liver disease, cirrhosis, and hepatic carcinoma in human. HBV surface protein antigen (HBsAg) is a protein that contains small (S), medium (M) and large (L) proteins. Large HBsAg contains preS1, preS2, and small proteins, which play an important role in HBV replication and infection. The HBV PreS1 Antibody is the specific antibody for preS1 detection.

#### Product Note

Recommended dilution factor:

ELISA: 1:5000-20000

WB: 1:1000-5000

IFA: 1:500-1000

Note: Working dilution for specific application should be determined by the investigator to obtain the best conditions.

### Specifications

#### Host

Mouse

#### Isotype

IgG1

#### Immunogen

Hepatitis B virus preS1 protein

#### Clonality

Monoclonal

#### Clone Name

clone S101

#### Reactivity

Hepatitis B virus

**Application**

ELISA, WB, IFA

**Concentration**

1 mg/mL

**Specificity**

preS1 protein

**Conjugation**

Unconjugated

**Storage Buffer**

Phosphate Buffered Saline containing 0.03% ProClin 300, pH 7.4.

**Form**

Liquid

**Instruction****Shipping**

The product is shipped with polar packs. Upon receipt, store it immediately at -20°C or lower for long term storage.




**Stability & Storage**

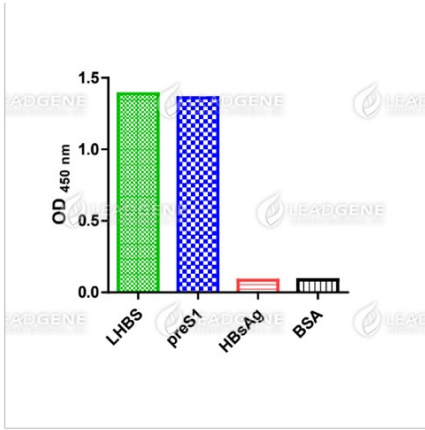
This product is stable after storage at:

- 2-8°C for 2 weeks under sterile conditions from date of receipt.
- -20°C or -80°C for 12 months under sterile conditions from date of receipt.

Avoid repeated freeze/thaw cycles.

Suggestion: Divide antibody into several vials.  
Keep only vials for usage at 2-8°C.

**Image****Tainan Headquarter** +886-6-2536677 [bd@leadgene.com.tw](mailto:bd@leadgene.com.tw)**Innovation & Research Center** +886-2-27065528**CLD Center** +886-6-2536677



Direct ELISA of HBV preS1  
antibody, clone S101

**Disclaimer :** For Research Use or Further Manufacturing Only.