

## Anti-HBsAg Antibody [Clone 3D5]

<b>Catalog Number</b>	LDG0053YA
<b>Package</b>	100 µg / Customized package

For full product information, images and publications, please visit [our website](#).



### Overview

#### Description

Hepatitis B virus (HBV) is the major pathogenic factor for inducing acute, chronic liver disease, cirrhosis, and hepatic carcinoma in human. HBV surface protein antigen (HBsAg) is a protein that contains small (S), medium (M) and large (L) proteins. It integrates on the outer envelope of the HBV. The HBsAg Antibody is the specific antibody for HBsAg detection.

#### Product Note

Recommended dilution factor:

ELISA: 1:5000-20000

WB: 1:1000-5000

IFA: 1:500-1000

Note: Working dilution for specific application should be determined by the investigator to obtain the best conditions.

### Specifications

#### Host

Mouse

#### Clonality

Monoclonal

#### Isotype

IgG2a

#### Clone Name

clone 3D5

#### Immunogen

Hepatitis B virus surface protein

#### Reactivity

Hepatitis B virus

#### Application

ELISA, WB, IFA

#### Conjugation

Unconjugated

#### Tainan Headquarters

+886-6-2536677

bd@leadgene.com.tw

#### Innovation & Research Center

+886-2-27065528

#### CLD Center

+886-6-2536677

**Concentration**

1 mg/mL

**Specificity**

Surface protein

**Storage Buffer**

Phosphate Buffered Saline containing 0.03% ProClin 300, pH 7.4.

**Form**

Liquid

**Instruction**
**Shipping**

The product is shipped with polar packs. Upon receipt, store it immediately at -20°C or lower for long term storage.

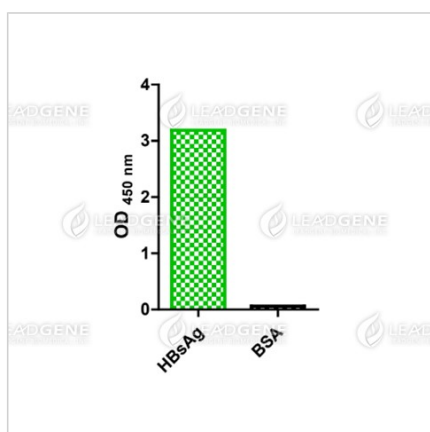
**Stability & Storage**

This product is stable after storage at:

- 2-8°C for 2 weeks under sterile conditions from date of receipt.
- -20°C or -80°C for 12 months under sterile conditions from date of receipt.

Avoid repeated freeze/thaw cycles.

Suggestion: Divide antibody into several vials. Keep only vials for usage at 2-8°C.

**Image**


Direct ELISA of HBsAg antibody, clone 3D5

**Disclaimer** : For Research Use or Further Manufacturing Only.

**Tainan Headquarters**

+886-6-2536677

bd@leadgene.com.tw

**Innovation & Research Center**

+886-2-27065528

**CLD Center**

+886-6-2536677

**Tainan Headquarters**

☎ +886-6-2536677

✉ [bd@leadgene.com.tw](mailto:bd@leadgene.com.tw)

**Innovation & Research Center**

☎ +886-2-27065528

**CLD Center**

☎ +886-6-2536677