

# Anti-HRV 3C Protease Antibody [Clone 3-1]

**Catalog Number** LDG0091YA

**Package** 100 µg / Customized package

For full product information, images and publications, please visit [our website](#).



## Overview

### Description

HRV 3C Protease is a cysteine protease recognizes the cleavage site: Leu-Glu-Val-Leu-Phe-Gln↓Gly-Pro (LEVLFQ↓GP). This enzyme is used to remove fusion tags from recombinant proteins with the specific cleavage sequence. Mouse anti-HRV 3C Protease mAb is suitable for detecting HRV 3C Protease.

### Product Note

Recognize HRV 3C Protease in ELISA, when monoclonal antibody was paired with Mouse anti-HRV 3C Protease mAb, clone 12-4 (cat. LDG0093YA) or Mouse anti-HRV 3C Protease mAb, clone 5-8 (cat. LDG0092YA).

Recommended dilution factor:  
 ELISA: 1:5000-20000

Note: Working dilution for specific application should be determined by the investigator to obtain the best conditions.

## Specifications

### Host

Mouse

### Clonality

Monoclonal

### Isotype

IgG1

### Clone Name

clone 3-1

### Immunogen

HRV 3C Protease

### Application

ELISA

**Conjugation**

Unconjugated

**Storage Buffer**

Phosphate Buffered Saline containing 0.03%  
ProClin 300, pH 7.4.

**Form**

Liquid

**Concentration**

Lot-dependent, please refer to product label.

**Specificity**

HRV 3C Protease

**Instruction****Shipping**

The product is shipped with polar packs. Upon receipt, store it immediately at -20°C or lower for long term storage.

**Stability & Storage**

This product is stable after storage at:

- 2-8°C for 2 weeks under sterile conditions from date of receipt.
- -20°C or -80°C for 12 months under sterile conditions from date of receipt.

Avoid repeated freeze/thaw cycles.

Suggestion: Divide antibody into several vials.

Keep only vials for usage at 2-8°C.

**Image****Tainan Headquarter**

+886-6-2536677

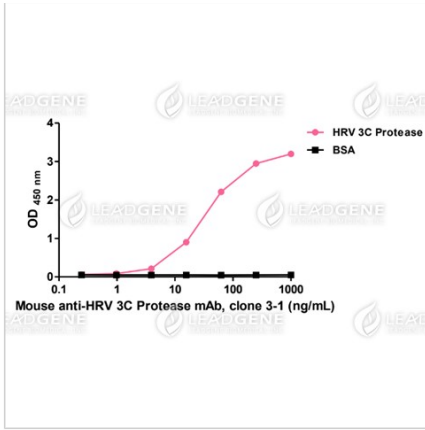
bd@leadgene.com.tw

**Innovation & Research Center**

+886-2-27065528

**CLD Center**

+886-6-2536677



ELISA titration of Mouse anti-HRV  
3C Protease mAb, clone 3-1

**Disclaimer :** For Research Use or Further Manufacturing Only.