

Swine IL-10, His Tag, E. coli

Catalog Number	LDG014PSE
Package	5 µg / 20 µg / 100 µg / Customized package

For full product information, images and publications, please visit [our website](#).



Specifications

Species of Origin

Swine

Affinity Tag

His Tag (C-term)

Purity

>98% as determined by SDS-PAGE analysis.

Activity

Measure by its ability to induce proliferation in MC/9-2 cells. The ED₅₀ for this effect is <5 ng/mL.

Form

Lyophilized

Expression System

Escherichia coli

Storage Buffer

Lyophilized from a 0.2 µm filtered solution of PBS, pH 7.4.

Molecular weight

The protein has a calculated MW of 19.05 kDa. The protein migrates as 17-25 kDa under reducing condition (SDS-PAGE analysis).

Endotoxin Level

<0.01 EU per 1 µg of the protein by the LAL method.

Background

Tainan Headquarter

+886-6-2536677

bd@leadgene.com.tw

Innovation & Research Center

+886-2-27065528

CLD Center

+886-6-2536677

Background

Interleukin 10 (IL-10) is a 17.54 kDa cytokine with 158 amino acid residues and is also known as human cytokine synthesis inhibitory factor (CSIF). IL-10 is an anti-inflammatory cytokine that is mainly secreted from monocytes, lymphocytes, and mast cells. IL-10 participates in the survival, proliferation, and antibody production of B cell via the JAK-STAT signaling pathway and suppress pro-inflammatory cytokine secretion by blocking the NF- κ B signaling pathway.

Uniprot ID

#Q29055

Synonyms

Interleukin-10, IL-10, Cytokine synthesis inhibitory factor, CSIF

Sequence Note

Ser19-Asn175

Instruction

Reconstitution

It is recommended to reconstitute the lyophilized protein in sterile H₂O to a concentration not less than 200 μ g/mL and incubate the stock solution for at least 20 min to ensure sufficient re-dissolved.

Stability & Storage

This product is stable after storage at:

- -20°C for 12 months in lyophilized state from date of receipt.
- -20°C or -80°C for 1 month under sterile conditions after reconstitution.

Avoid repeated freeze/thaw cycles.

Shipping

The product is shipped with polar packs. Upon receipt, store it immediately at -20°C or lower for long term storage.

Image

Tainan Headquarter

+886-6-2536677

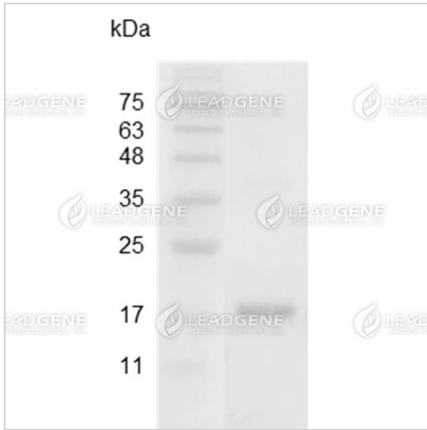
bd@leadgene.com.tw

Innovation & Research Center

+886-2-27065528

CLD Center

+886-6-2536677



SDS-PAGE analysis of recombinant swine IL-10.

Disclaimer : For Research Use or Further Manufacturing Only.