

Anti-D-Dimer Antibody [Clone DD01]

Catalog Number	LDG0166YA
Package	100 µg / Customized package

For full product information, images and publications, please visit [our website](#).



Overview

Description

Blood clotting is an essential physiological process preventing losing blood and pathogen infection in wounds. Subsequent fibrinolytic lysis, d-dimer is the most miniature fibrinolysis-specific degradation product in circulation. The d-dimer is served as a clinically crucial diagnostic marker for blood clotting disorders such as deep vein thrombosis (DVT), pulmonary embolism (PE), and disseminated intravascular coagulation (DIC). These systemic illnesses can be severe and even life-threatening.

Product Note

Recognize human D-Dimer in ELISA, when monoclonal antibody was paired with Anti-D-Dimer Antibody [clone DD03] (cat. LDG0165YA)

Recommended dilution factor:
ELISA: 1:5000-20000

Note: Working dilution for specific application should be determined by the investigator to obtain the best conditions.

Specifications

Host	Clonality
Mouse	Monoclonal
Isotype	Clone Name
IgG1	clone DD01
Application	Conjugation
ELISA, CLIA, LFIA	Unconjugated

Tainan Headquarters

+886-6-2536677

bd@leadgene.com.tw

Innovation & Research Center

+886-2-27065528

CLD Center

+886-6-2536677

Concentration

1 mg/mL

Specificity

D-Dimer

Storage Buffer

Phosphate Buffered Saline containing 0.03% ProClin 300, pH 7.4.

Form

Liquid

Instruction**Shipping**

The product is shipped with polar packs. Upon receipt, store it immediately at -20°C or lower for long term storage.

Stability & Storage

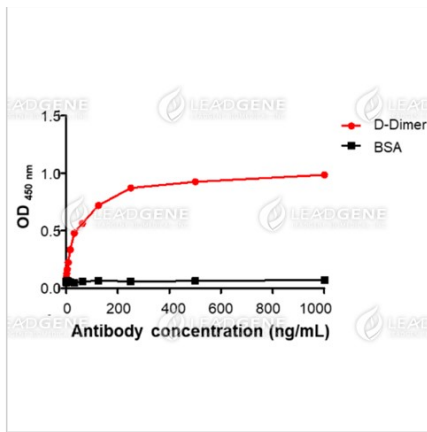
This product is stable after storage at:

- 2-8°C for 2 weeks under sterile conditions from date of receipt.
- -20°C or -80°C for 12 months under sterile conditions from date of receipt.

Avoid repeated freeze/thaw cycles.

Suggestion: Divide antibody into several vials. Keep only vials for usage at 2-8°C.

Image**Tainan Headquarters** +886-6-2536677 bd@leadgene.com.tw**Innovation & Research Center** +886-2-27065528**CLD Center** +886-6-2536677



ELISA titration of Anti-D-Dimer

Antibody [Clone DD01]

The D-Dimer and BSA were coated onto wells of a 96 well plate. Indirect ELISA was performed using Anti-D-Dimer Antibody [Clone DD01].

Disclaimer : For Research Use or Further Manufacturing Only.