

## Anti-Influenza B Virus NP Antibody [Clone IB06]

**Catalog Number** LDG0176YA

**Package** 100 µg / Customized package

For full product information, images and publications, please visit [our website](#).



### Overview

#### Description

Anti-Influenza B virus NP Antibody [clone IB06] only recognizes nucleocapsid protein (NP) of influenza B viruses but not influenza A viruses. Influenza B viruses are RNA viruses and divided into two genetic lineages (B/Yamagata and B/Victoria). Influenza B viruses are not classified by subtype like influenza A viruses.

#### Product Note

Recognize Influenza B virus NP in Lateral Flow, when clone IB06 antibody was paired with Anti-Influenza B virus NP Antibody [clone IB05] (cat. LDG0175YA).

Recommended dilution factor:  
 ELISA: 1:5000-20000

Note: Working dilution for specific application should be determined by the investigator to obtain the best conditions.

### Specifications

#### Host

Mouse

#### Clonality

Monoclonal

#### Isotype

IgG2a

#### Clone Name

clone IB06

**Immunogen**

Recombinant Influenza B virus Nucleocapsid protein

**Application**

ELISA, CLIA, LFIA

**Concentration**

1 mg/mL

**Specificity**

Nucleocapsid protein

**Reactivity**

Influenza B virus

**Conjugation**

Unconjugated

**Storage Buffer**

Phosphate Buffered Saline containing 0.03% ProClin 300, pH 7.4.

**Form**

Liquid

**Instruction****Shipping**

The product is shipped with polar packs. Upon receipt, store it immediately at -20°C or lower for long term storage.

**Stability & Storage**

This product is stable after storage at:

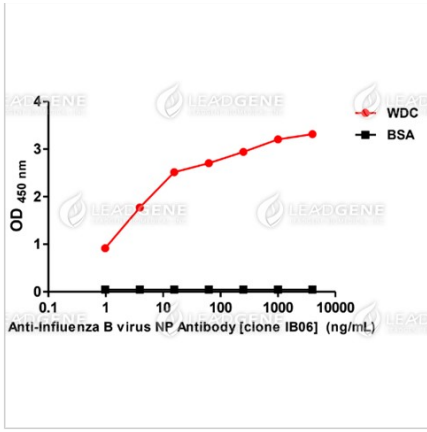
- 2-8°C for 2 weeks under sterile conditions from date of receipt.
- -20°C or -80°C for 12 months under sterile conditions from date of receipt.

Avoid repeated freeze/thaw cycles.

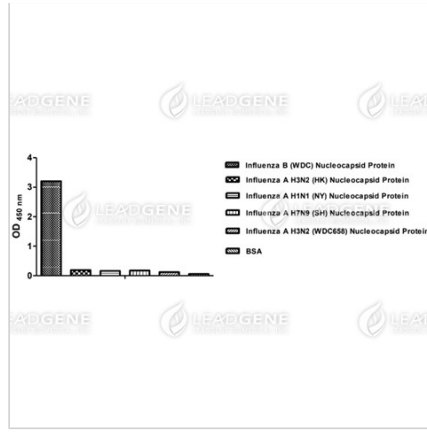
Suggestion: Divide antibody into several vials.

Keep only vials for usage at 2-8°C.

**Image**



ELISA titration of Anti-Influenza B virus NP Antibody [clone IB06]



ELISA assay of Anti-Influenza B virus NP Antibody [clone IB06]

**Disclaimer :** For Research Use or Further Manufacturing Only.