

Anti-MPXV M1R Antibody [Clone 64-2]

Catalog Number	LDG0187YA
Package	100 µg / Customized package

For full product information, images and publications, please visit [our website](#).



Overview

Description

Monkeypox is a zoonotic disease caused by the Monkeypox virus (MPXV), a DNA virus that belongs to the Orthopoxvirus genus, which also includes variola virus (smallpox) and cowpox virus. The MPXV M1R protein is a type I transmembrane protein and is homologous to the vaccinia virus Copenhagen L1R protein. It is a critical component of the virus particle and is essential for viral entry and replication. Anti-MPXV M1R Antibody [Clone 64-2] recognize Monkeypox virus (MPXV) M1R protein.

Product Note

Recognize MPXV M1R protein in ELISA and Lateral Flow, when monoclonal antibody was paired with Anti-MPXV M1R Antibody [Clone 82-4] (cat. LDG0188YA)

Recommended dilution factor:

ELISA: 1:5000-20000

IFA: 1:500-1:1000

FACS: Assay dependent

Note: Working dilution for specific application should be determined by the investigator to obtain the best conditions.

Specifications

Host	Clonality
Mouse	Monoclonal
Isotype	Clone Name
IgG1	clone 64-2
Immunogen	Reactivity
Recombinant MPXV M1R protein	Monkeypox virus

Tainan Headquarters

+886-6-2536677

bd@leadgene.com.tw

Innovation & Research Center

+886-2-27065528

CLD Center

+886-6-2536677

Application

ELISA, WB, IFA, LFIA

Concentration

1 mg/mL

Specificity

M1R protein

Conjugation

Unconjugated

Storage Buffer

Phosphate Buffered Saline containing 0.03% ProClin 300, pH 7.4.

Form

Liquid

Instruction**Shipping**

The product is shipped with polar packs. Upon receipt, store it immediately at -20°C or lower for long term storage.



Stability & Storage

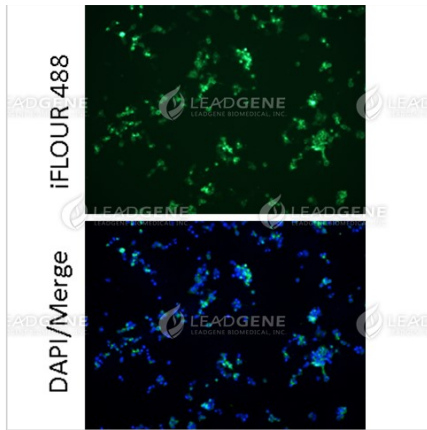
This product is stable after storage at:

- 2-8°C for 2 weeks under sterile conditions from date of receipt.
- -20°C or -80°C for 12 months under sterile conditions from date of receipt.

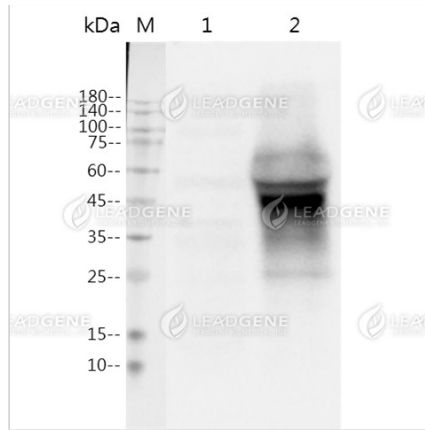
Avoid repeated freeze/thaw cycles.

Suggestion: Divide antibody into several vials. Keep only vials for usage at 2-8°C.

Image**Tainan Headquarters** +886-6-2536677 bd@leadgene.com.tw**Innovation & Research Center** +886-2-27065528**CLD Center** +886-6-2536677



Immunofluorescence analysis of Anti-MPXV M1R Antibody [Clone 64-2].



Western blotting analysis of Anti-MPXV M1R Antibody [Clone 64-2]
 Western blot: M1R expressed 293T cell lysates were stained with mouse anti-MPXV M1R monoclonal antibody.
 Lane 1: 293T mock cell lysate, Lane 2: 293T MPXV cell lysate.

Disclaimer : For Research Use or Further Manufacturing Only.