

## Anti-MPXV M1R Antibody [Clone 82-4]

**Catalog Number** LDG0188YA

**Package** 100 µg / Customized package

For full product information, images and publications, please visit [our website](#).



### Overview

#### Description

Monkeypox is a zoonotic disease caused by the Monkeypox virus (MPXV), is a DNA virus that belongs to the Orthopoxvirus genus, which also includes variola virus (smallpox) and cowpox virus. The MPXV M1R protein is a type I transmembrane protein and is homologous to the vaccinia virus Copenhagen L1R protein. It is a critical component of the virus particle and is essential for viral entry and replication. Anti-MPXV M1R Antibody [Clone 82-4] recognize Monkeypox virus (MPXV) M1R protein.

#### Product Note

Recognize MPXV M1R protein in ELISA and Lateral Flow, when monoclonal antibody was paired with Anti-MPXV M1R Antibody [Clone 64-2] (cat. LDG0187YA)

Recommended dilution factor:

ELISA: 1:5000-20000

IFA: 1:500-1:1000

FACS: Assay dependent

Note: Working dilution for specific application should be determined by the investigator to obtain the best conditions.

### Specifications

#### Host

Mouse

#### Clonality

Monoclonal

#### Isotype

IgG1

#### Clone Name

clone 82-4

**Immunogen**

Recombinant MPXV M1R protein

**Application**

ELISA, WB, IFA, LFIA

**Concentration**

1 mg/mL

**Specificity**

M1R protein

**Reactivity**

Monkeypox virus

**Conjugation**

Unconjugated

**Storage Buffer**

Phosphate Buffered Saline containing 0.03% ProClin 300, pH 7.4.

**Form**

Liquid

**Instruction****Shipping**

The product is shipped with polar packs. Upon receipt, store it immediately at -20°C or lower for long term storage.

**Stability & Storage**




This product is stable after storage at:

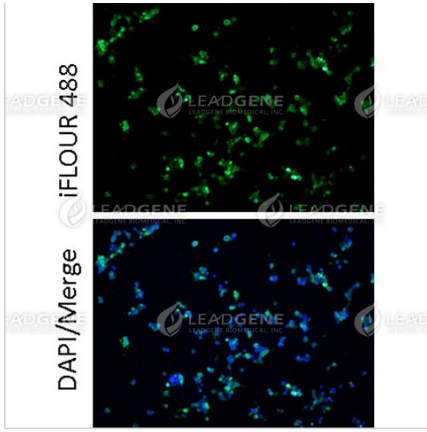
- 2-8°C for 2 weeks under sterile conditions from date of receipt.
- -20°C or -80°C for 12 months under sterile conditions from date of receipt.

Avoid repeated freeze/thaw cycles.

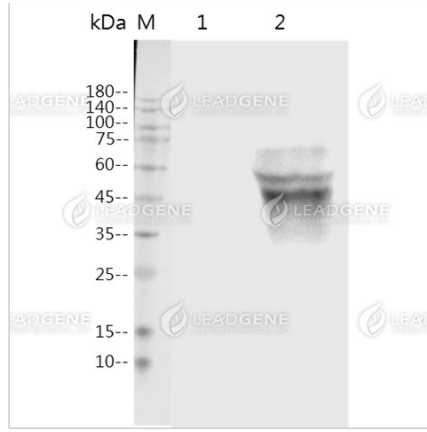
Suggestion: Divide antibody into several vials.

Keep only vials for usage at 2-8°C.

**Image****Tainan Headquarter** +886-6-2536677 [bd@leadgene.com.tw](mailto:bd@leadgene.com.tw)**Innovation & Research Center** +886-2-27065528**CLD Center** +886-6-2536677



Immunofluorescence analysis of Anti-MPXV M1R Antibody [Clone 82-4].



Western blotting analysis of Anti-MPXV M1R Antibody [Clone 82-4]  
Western blot: M1R expressed 293T cell lysates were stained with mouse anti-MPXV M1R monoclonal antibody. Lane 1: 293T mock cell lysate, Lane 2: 293T MPXV cell lysate.

**Disclaimer :** For Research Use or Further Manufacturing Only.