

Anti-MPXV L1R Antibody [Clone 5-1]

Catalog Number LDG0190YA

Package 100 µg / Customized package

For full product information, images and publications, please visit [our website](#).



Overview

Description

Monkeypox is a zoonotic disease caused by the Monkeypox virus (MPXV), a DNA virus that belongs to the Orthopoxvirus genus, which also includes variola virus (smallpox) and cowpox virus. The MPXV L1R protein is a type I transmembrane protein and is homologous to the vaccinia virus Copenhagen J1R protein. It plays a critical role in the virus's outer membrane and is essential for virus-host interactions. Anti-MPXV M1R Antibody [Clone 82-4] recognize Monkeypox virus (MPXV) M1R protein.

Product Note

Recommended dilution factor:

ELISA: 1:5000-20000

IFA: 1:500-1:1000

FACS: Assay dependent

Note: Working dilution for specific application should be determined by the investigator to obtain the best conditions.

Specifications

Host

Mouse

Isotype

IgG1

Immunogen

Recombinant MPXV L1R protein

Clonality

Monoclonal

Clone Name

clone 5-1

Reactivity

Monkeypox virus

Application

ELISA, WB, IFA

Concentration

1 mg/mL

Specificity

L1R protein

Conjugation

Unconjugated

Storage Buffer

Phosphate Buffered Saline containing 0.03% ProClin 300, pH 7.4.

Form

Liquid

Instruction**Shipping**

The product is shipped with polar packs. Upon receipt, store it immediately at -20°C or lower for long term storage.

Stability & Storage




This product is stable after storage at:

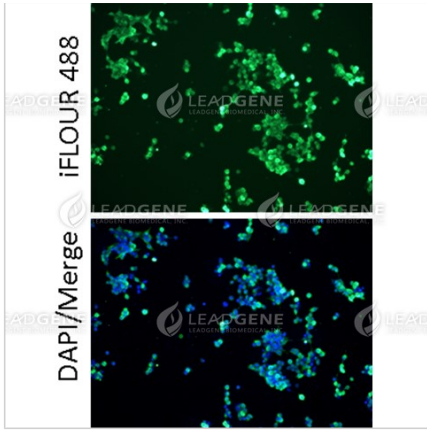
- 2-8°C for 2 weeks under sterile conditions from date of receipt.
- -20°C or -80°C for 12 months under sterile conditions from date of receipt.

Avoid repeated freeze/thaw cycles.

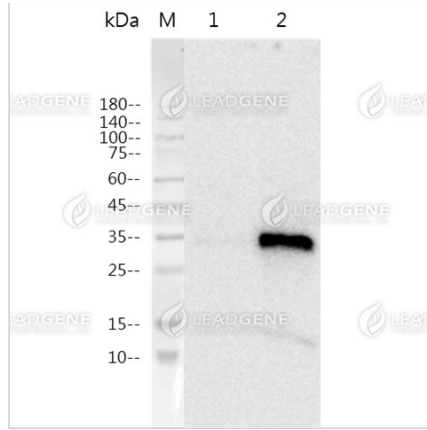
Suggestion: Divide antibody into several vials.

Keep only vials for usage at 2-8°C.

Image**Tainan Headquarter** +886-6-2536677 bd@leadgene.com.tw**Innovation & Research Center** +886-2-27065528**CLD Center** +886-6-2536677



Immunofluorescence analysis of Anti-MPXV L1R Antibody [Clone 5-1].



Western blotting analysis of Anti-MPXV L1R Antibody [Clone 5-1]
Western blot: L1R expressed 293T cell lysates were stained with mouse anti-MPXV L1R monoclonal antibody. Lane 1: 293T mock cell lysate, Lane 2: 293T MPXV cell lysate.

Disclaimer : For Research Use or Further Manufacturing Only.