

Anti-HbA1c Antibody [Clone 6-2]

Catalog Number LDG0191YA

Package Customized package / 100 µg

For full product information, images and publications, please visit [our website](#).



Overview

Description

Hemoglobin (Hb) is the major component of red blood cell. Hb is a iron-containing oxygen transport protein which carries oxygen from pulmonary alveolus to the cells. Hb is a quaternary structure that contains four subunits. HbA1c (Glycated hemoglobin; hemoglobin A1c) is a form Hb is linked to sugar. The HbA1c level can indicate three-month average blood sugar level.

Product Note

Recommended dilution factor:
ELISA: 1:5000-20000

Note: Working dilution for specific application should be determined by the investigator to obtain the best conditions.

Specifications

Host

Mouse

Isotype

IgG1

Immunogen

KLH-conjugated HbA1c peptide

Clonality

Monoclonal

Clone Name

clone 6-2

Reactivity

Human

Application

ELISA, LFIA

Concentration

1 mg/mL

Specificity

HbA1c protein

Conjugation

Unconjugated

Storage Buffer

Phosphate Buffered Saline containing 0.03% ProClin 300, pH 7.4.

Form

Liquid

Instruction**Shipping**

The product is shipped with polar packs. Upon receipt, store it immediately at -20°C for long term storage.

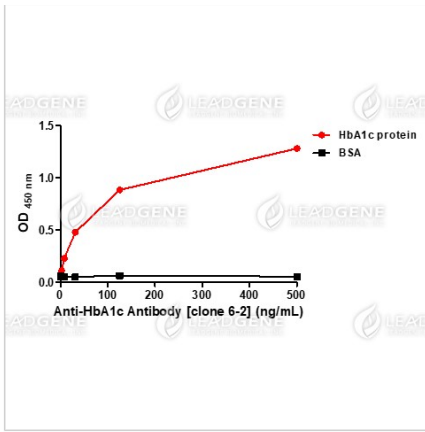
Stability & Storage

This product is stable after storage at:

- -20°C or -80°C for 12 months under sterile conditions from date of receipt.

Briefly centrifuge vials before opening.

Image



ELISA titration of Anti-HbA1c
Antibody [Clone 6-2].

Titration curve of Anti-HbA1c
Antibody in ELISA. Red: HbA1c ;
Black: BSA (negative control).

Disclaimer : For Research Use or Further Manufacturing Only.