

Swine TGF Beta 1, His Tag, E. coli

Catalog Number LDG020PSE

Package 5 µg / 20 µg / 100 µg / Customized package

For full product information, images and publications, please visit [our website](#).



Specifications

Species of Origin

Swine

Affinity Tag

His Tag (C-term)

Purity

>98% as determined by SDS-PAGE analysis.

Activity

Measure by its ability to inhibit IL-4-induced proliferation in HT-2 cells. The ED₅₀ for this effect is <0.1 ng/mL.

Form

Lyophilized

Expression System

Escherichia coli

Storage Buffer

Lyophilized from a 0.2 µm filtered solution containing 20 mM sodium citrate and 0.2 M NaCl, pH 4.5.

Molecular weight

The protein has a calculated MW of 13.73 kDa. The protein migrates as 11-17 kDa under reducing condition (SDS-PAGE analysis).

Endotoxin Level

<0.1 EU per 1 µg of the protein by the LAL method.

Background

Tainan Headquarter

+886-6-2536677

bd@leadgene.com.tw

Innovation & Research Center

+886-2-27065528

CLD Center

+886-6-2536677

Background

Transforming Growth Factors beta 1 (TGF beta 1) is the cytokine of the TGF-beta family, which is a 12.5 kDa protein containing 113 amino acid residues. TGF beta 1 is produced by white blood cell which plays an important role in inflammation, cell proliferation and differentiation. TGF beta 1 also has several functions about cancer and auto-immune diseases. TGF-beta 1 not only can activate the smad signaling but also can induce the MAPK, Rhoa and RAS.

Uniprot ID

#P07200

Synonyms

Transforming Growth Factors beta-1 proprotein

Sequence Note

Ala279-Ser390

Instruction

Reconstitution

It is recommended to reconstitute the lyophilized protein in sterile H₂O to a concentration not less than 200 µg/mL and incubate the stock solution for at least 20 min to ensure sufficient re-dissolved.

Stability & Storage

This product is stable after storage at:

- -20°C for 12 months in lyophilized state from date of receipt.
- -20°C or -80°C for 1 month under sterile conditions after reconstitution.

Avoid repeated freeze/thaw cycles.

Shipping

The product is shipped with polar packs. Upon receipt, store it immediately at -20°C or lower for long term storage.

Image

Tainan Headquarter

+886-6-2536677

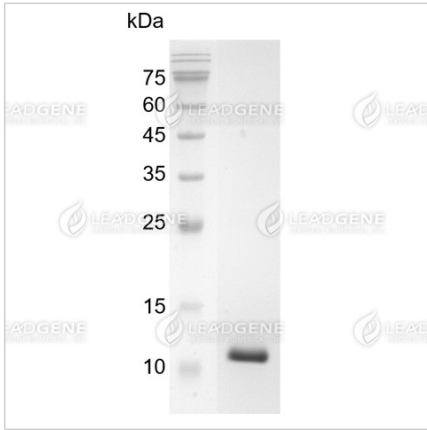
bd@leadgene.com.tw

Innovation & Research Center

+886-2-27065528

CLD Center

+886-6-2536677



SDS-PAGE analysis of recombinant swine TGF beta 1.

Disclaimer : For Research Use or Further Manufacturing Only.