

## Anti-Flavivirus E IgG Antibody

**Catalog Number** LDG0222YA

**Package** 100 µg / Customized package

For full product information, images and publications, please visit [our website](#).



### Overview

#### Description

The Flavivirus E protein, also known as the envelope protein, is a crucial component of the Flavivirus virion (the infectious particle). Flaviviruses are a family of RNA viruses that include several significant human pathogens such as dengue virus, Zika virus, yellow fever virus, and West Nile virus.

### Specifications

#### Clonality

Recombinant Human IgG

#### Reactivity

Flavivirus

#### Conjugation

Unconjugated

#### Storage Buffer

Phosphate Buffered Saline containing 0.03% Proclin300, pH 7.4.

#### Form

Liquid

#### Immunogen

Flavivirus E protein

#### Application

ELISA, LFA

#### Concentration

Lot-dependent, please refer to product label.

#### Specificity

Envelope protein

### Instruction

#### Tainan Headquarter

+886-6-2536677

bd@leadgene.com.tw

#### Innovation & Research Center

+886-2-27065528

#### CLD Center

+886-6-2536677

### Shipping

The product is shipped with polar packs. Upon receipt, store it immediately at -20°C or lower for long term storage.

### Stability & Storage

This product is stable after storage at:

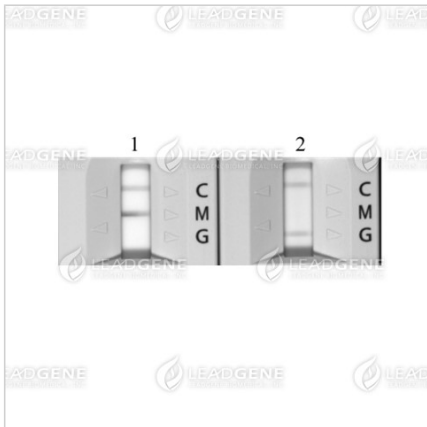
- 2-8°C for 2 weeks under sterile conditions from date of receipt.
- -20°C or -80°C for 12 months under sterile conditions from date of receipt.

Avoid repeated freeze/thaw cycles.

Suggestion: Divide antibody into several vials.

Keep only vials for usage at 2-8°C.

### Image



The Anti-Flavivirus E IgG Antibody (LDG0222YA) can be detected by commercial Dengue virus (DENV) Antibody Rapid Test. Lane 1 : Anti-Flavivirus E IgM Antibody (LDG0223YA) Lane 2 : Anti-Flavivirus E IgG Antibody (LDG0222YA)

**Disclaimer :** For Research Use or Further Manufacturing Only.