

Human IL-21, His Tag, E. coli

Catalog Number LDG025PHE

Package 5 µg / 20 µg / 100 µg / Customized package

For full product information, images and publications, please visit [our website](#).



Specifications

Species of Origin

Human

Affinity Tag

His Tag (C-term)

Purity

>95% as determined by SDS-PAGE analysis.

Activity

Measure by its ability to enhance IFN gamma secretion in NK-92 cells. The ED₅₀ for this effect is <10 ng/mL.

Form

Lyophilized

Expression System

Escherichia coli

Storage Buffer

Lyophilized from a 0.2 µm filtered solution of PBS, pH 8.0.

Molecular weight

The protein has a calculated MW of 16.2 kDa. The protein migrates as 20 kDa under reducing condition (SDS-PAGE analysis).

Endotoxin Level

<0.1 EU per 1 µg of the protein by the LAL method.

Background

Tainan Headquarter

+886-6-2536677

✉ bd@leadgene.com.tw

Innovation & Research Center

+886-2-27065528

CLD Center

+886-6-2536677

Background

Interleukin-21 (IL-21) belongs to the IL-15/IL-21 family, which exerts pleiotropic immune regulations. IL-21 produced primarily by natural killer T (NKT) cells, T follicular helper (TFH) cells and TH17 cells. As a pleiotropic cytokine, IL-21 has been shown to regulate both innate and humoral immunity. It has potent inhibitory activity towards the activation and maturation of granulocyte-macrophage colony-stimulating factor (GM-CSF)-induced dendritic cells (DCs). In B cells, IL-21 has a major role in the development of immunoglobulin responses. In T cells, it is required to facilitate the functional differentiation of several CD4+ T cell subsets. In addition, the ability of IL-21 to enhance the cytotoxic activity of both CD8+ T cells and NK cells makes it as a potential antitumor agent.

Uniprot ID

#Q9HBE4

Synonyms

Interleukin-21, Za11

Sequence Note

Gln32-Ser162

Instruction

Reconstitution

It is recommended to reconstitute the lyophilized protein in sterile H₂O to a concentration not less than 200 µg/mL and incubate the stock solution for at least 20 min to ensure sufficient re-dissolved.

Shipping

The product is shipped with polar packs. Upon receipt, store it immediately at -20°C or lower for long term storage.

Tainan Headquarter

+886-6-2536677

bd@leadgene.com.tw

Innovation & Research Center

+886-2-27065528

CLD Center

+886-6-2536677

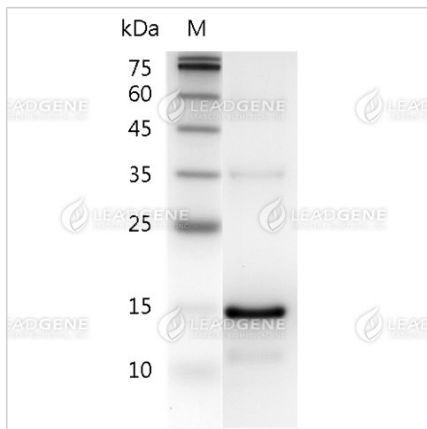
Stability & Storage

This product is stable after storage at:

- -20°C for 12 months in lyophilized state from date of receipt.
- -20°C or -80°C for 1 month under sterile conditions after reconstitution.

Avoid repeated freeze/thaw cycles.

Image



SDS-PAGE analysis of recombinant human IL-21.

Disclaimer : For Research Use or Further Manufacturing Only.