

## Human IL-22, His Tag, E. coli

Catalog Number	LDG026PHE
Package	5 µg / 20 µg / 100 µg / Customized package

For full product information, images and publications, please visit [our website](#).



### Specifications

#### Species of Origin

Human

#### Affinity Tag

His Tag (C-term)

#### Purity

>98% as determined by SDS-PAGE analysis.

#### Activity

Measure by its ability to induce proliferation in A549 cells. The ED<sub>50</sub> for this effect is <0.5 ng/mL.

#### Form

Lyophilized

#### Expression System

Escherichia coli

#### Storage Buffer

Lyophilized from a 0.2 µm filtered solution of PBS, pH 8.0.

#### Molecular weight

The protein has a calculated MW of 17.83 kDa. The protein migrates as 14 kDa under reducing condition (SDS-PAGE analysis).

#### Endotoxin Level

<0.1 EU per 1 µg of the protein by the LAL method.

### Background

#### Tainan Headquarter

+886-6-2536677

bd@leadgene.com.tw

#### Innovation & Research Center

+886-2-27065528

#### CLD Center

+886-6-2536677

### Background

Interleukin 22(IL-22) is an  $\alpha$ -helical cytokine, predicts a molecular mass of 16.9 kDa. It is produced by T-helper (Th)-17 cells,  $\gamma\delta$  T cells, NKT cells and newly described innate lymphoid cells (ILCs). Effects involve stimulation of cell survival, proliferation and synthesis of antimicrobials including S120, Reg3 $\beta$ , Reg3 $\gamma$  and defensins.

### Uniprot ID

#Q9GZX6

### Synonyms

Cytokine Zcyto18, IL-10-related T-cell-derived-inducible factor, IL-TIF, Interleukin-22

### Sequence Note

Ala34-Ile179

## Instruction

### Reconstitution

It is recommended to reconstitute the lyophilized protein in sterile H<sub>2</sub>O to a concentration not less than 200  $\mu$ g/mL and incubate the stock solution for at least 20 min to ensure sufficient re-dissolved.

### Stability & Storage

This product is stable after storage at:

- -20°C for 12 months in lyophilized state from date of receipt.
- -20°C or -80°C for 1 month under sterile conditions after reconstitution.

Avoid repeated freeze/thaw cycles.

### Shipping

The product is shipped with polar packs. Upon receipt, store it immediately at -20°C or lower for long term storage.

## Image

### Tainan Headquarter

+886-6-2536677

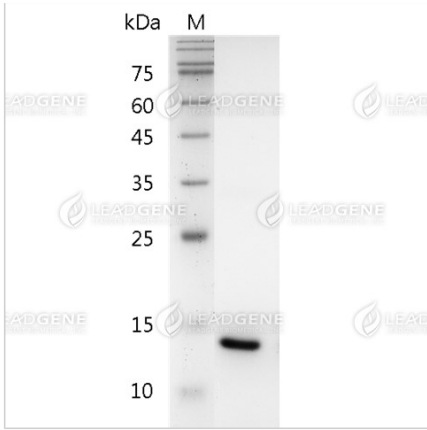
bd@leadgene.com.tw

### Innovation & Research Center

+886-2-27065528

### CLD Center

+886-6-2536677



SDS-PAGE analysis of recombinant human IL-22.

**Disclaimer :** For Research Use or Further Manufacturing Only.