

## Mouse Serum Albumin, His Tag, HEK293

**Catalog Number** LDG027PMM

**Package** 5 µg / 20 µg / 100 µg / Customized package

For full product information, images and publications, please visit [our website](#).



### Specifications

#### Species of Origin

Mouse

#### Affinity Tag

His Tag (C-term)

#### Purity

>95% as determined by SDS-PAGE analysis.

#### Endotoxin Level

<0.1 EU per 1 µg of the protein by the LAL method.

#### Expression System

HEK293

#### Storage Buffer

Lyophilized from a 0.2 µm filtered solution of PBS, pH 7.4.

#### Molecular weight

The protein has a calculated MW of 66.71 kDa. The protein migrates as 60-65 kDa under reducing condition (SDS-PAGE analysis).

#### Form

Lyophilized

### Background

#### Tainan Headquarter

+886-6-2536677

bd@leadgene.com.tw

#### Innovation & Research Center

+886-2-27065528

#### CLD Center

+886-6-2536677

### Background

Serum albumin is a vital protein found in blood plasma, crucial for maintaining osmotic pressure and transporting various substances throughout the body. Comprising approximately 50-60% of the total protein in human plasma, serum albumin plays a pivotal role in regulating the distribution of hormones, fatty acids, and drugs. Its ability to bind to these molecules facilitates their transport, ensuring essential nutrients reach cells while aiding in waste removal. Additionally, serum albumin contributes to the body's defense mechanism by binding to and neutralizing toxins and free radicals. Its significance extends beyond its physiological roles, as serum albumin levels serve as indicators of overall health, with deviations often linked to conditions like malnutrition, liver disease, or kidney disorders. Understanding the multifaceted functions of serum albumin underscores its importance in maintaining homeostasis and overall well-being.

### Uniprot ID

P07724-1

### Synonyms

Albumin

### Sequence Note

Met1-Met608

## Instruction

### Reconstitution

It is recommended to reconstitute the lyophilized protein in sterile H<sub>2</sub>O to a concentration not less than 0.2 mg/mL and incubate the stock solution for at least 20 min to ensure sufficient re-dissolved.

### Shipping

The product is shipped with polar packs. Upon receipt, store it immediately at -20°C or lower for long term storage.

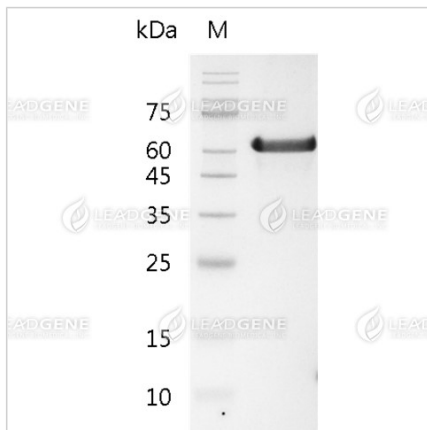
### Stability & Storage

This product is stable after storage at:

- -20°C for 12 months in lyophilized state from date of receipt.
- -20°C or -80°C for 1 month under sterile conditions after reconstitution.

Avoid repeated freeze/thaw cycles.

### Image



SDS-PAGE analysis of recombinant mouse serum albumin.

**Disclaimer :** For Research Use or Further Manufacturing Only.