

## Human FIXa, His Tag, CHO

Catalog Number LDG029PHM

Package

For full product information, images and publications, please visit [our website](#).



### Specifications

#### Species of Origin

Human

#### Affinity Tag

His Tag (C-term)

#### Purity

>95% as determined by SDS-PAGE analysis.

#### Endotoxin Level

<0.1 EU per 1 µg of the protein by the LAL method.

#### Expression System

CHO

#### Storage Buffer

Lyophilized from a 0.2 µm filtered solution of PBS, pH 7.4.

#### Molecular weight

The protein has a calculated MW of 49.54 kDa. The protein migrates as 50-60 kDa under reducing condition (SDS-PAGE analysis).

#### Form

Lyophilized

### Background

Tainan Headquarter

+886-6-2536677

bd@leadgene.com.tw

Innovation & Research Center

+886-2-27065528

CLD Center

+886-6-2536677

### Background

FIXa (Factor IXa) protein is a serine protease involved in the coagulation cascade. Upon activation by Factor XIa or tissue factor-Factor VIIa complex, FIXa forms a complex with Factor VIIIa on phospholipid surfaces. This complex activates Factor X to Xa, ultimately leading to the formation of thrombin and fibrin clot formation. FIXa deficiency results in hemophilia B. Targeting FIXa activity is a therapeutic approach for controlling blood coagulation in hemophilia treatment. Understanding FIXa's role in hemostasis is crucial for developing hemophilia therapies and managing thrombotic disorders.

### Uniprot ID

P00740

### Synonyms

Coagulation factor IX, Christmas factor, Plasma thromboplastin component (PTC)

### Sequence Note

Met1-Thr461

## Instruction

### Reconstitution

It is recommended to reconstitute the lyophilized protein in 4 mM HCl to a concentration not less than 200 µg/mL and incubate the stock solution for at least 20 min to ensure sufficient re-dissolved.

### Stability & Storage

This product is stable after storage at:

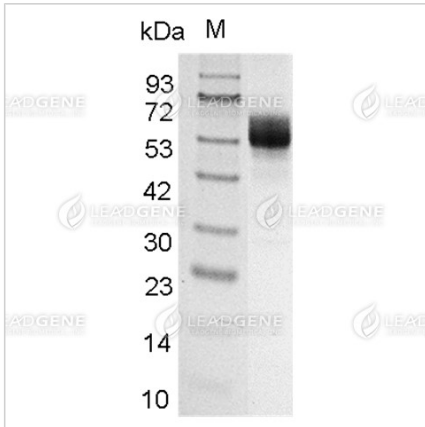
- -20°C for 12 months in lyophilized state from date of receipt.
- -20°C or -80°C for 1 month under sterile conditions after reconstitution.

Avoid repeated freeze/thaw cycles.

### Shipping

The product is shipped with polar packs. Upon receipt, store it immediately at -20°C or lower for long term storage.

Image



SDS-PAGE analysis of recombinant human FIXa.

**Disclaimer :** For Research Use or Further Manufacturing Only.