

Mouse Glypican 1, His Tag, HEK293

Catalog Number LDG029PMM

Package 5 µg / 20 µg / 100 µg / Customized package

For full product information, images and publications, please visit [our website](#).



Specifications

Species of Origin

Mouse

Affinity Tag

His Tag (C-term)

Purity

>95% as determined by SDS-PAGE analysis.

Endotoxin Level

<0.1 EU per 1 µg of the protein by the LAL method.

Expression System

HEK293

Storage Buffer

Lyophilized from a 0.2 µm filtered solution of PBS, pH 7.4.

Molecular weight

The protein has a calculated MW of 56.5 kDa. The protein migrates as 60 kDa under reducing condition (SDS-PAGE analysis).

Form

Lyophilized

Background

Tainan Headquarter

+886-6-2536677

bd@leadgene.com.tw

Innovation & Research Center

+886-2-27065528

CLD Center

+886-6-2536677

Background

Mouse Glypican1 (GPC1) is a cell surface heparan sulfate proteoglycan that belongs to the glypican family. It is involved in various cellular processes, including growth factor signaling, cell adhesion, and differentiation. GPC1 interacts with multiple ligands, such as Wnts, Hedgehogs, and FGFs, through its heparan sulfate chains, modulating their activities and mediating their effects on cell behavior. Additionally, GPC1 has been implicated in embryonic development, neurogenesis, and tumorigenesis. In cancer, GPC1 overexpression is associated with tumor growth, invasion, and metastasis, making it a potential diagnostic and therapeutic target. Research on mouse GPC1 provides insights into the molecular mechanisms underlying its diverse functions and its role in disease pathogenesis. Understanding GPC1 biology may lead to the development of novel therapeutic strategies for cancer and other diseases involving aberrant growth factor signaling.

Uniprot ID

Q9QZF2

Synonyms

Gpc1

Sequence Note

Met1-Ser529

Instruction

Reconstitution

It is recommended to reconstitute the lyophilized protein in sterile H₂O to a concentration not less than 0.2 mg/mL and incubate the stock solution for at least 20 min to ensure sufficient re-dissolved.

Shipping

The product is shipped with polar packs. Upon receipt, store it immediately at -20°C or lower for long term storage.

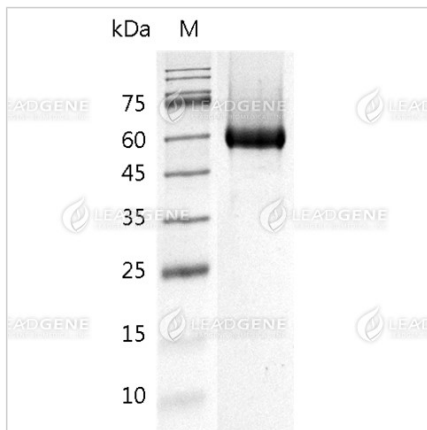
Stability & Storage

This product is stable after storage at:

- -20°C for 12 months in lyophilized state from date of receipt.
- -20°C or -80°C for 1 month under sterile conditions after reconstitution.

Avoid repeated freeze/thaw cycles.

Image



SDS-PAGE analysis of recombinant mouse glypican 1.

Disclaimer : For Research Use or Further Manufacturing Only.