

## Human CD7, His Tag, CHO

Catalog Number LDG034PHM

Package

For full product information, images and publications, please visit [our website](#).



### Specifications

#### Species of Origin

Human

#### Affinity Tag

His Tag (C-term)

#### Purity

>95% as determined by SDS-PAGE analysis.

#### Endotoxin Level

<0.1 EU per 1 µg of the protein by the LAL method.

#### Expression System

CHO

#### Storage Buffer

Lyophilized from a 0.2 µm filtered solution of PBS, pH 7.4.

#### Molecular weight

The protein has a calculated MW of 17.24 kDa. The protein migrates as 25-35 kDa under reducing condition (SDS-PAGE analysis).

#### Form

Lyophilized

### Background

Tainan Headquarter

+886-6-2536677

bd@leadgene.com.tw

Innovation & Research Center

+886-2-27065528

CLD Center

+886-6-2536677

### Background

CD7 protein, a transmembrane glycoprotein, is primarily expressed on T cells and NK cells. It functions as a co-stimulatory molecule in T cell activation and mediates adhesion between immune cells. CD7 also plays a role in T cell development and migration to peripheral tissues. Aberrant CD7 expression is observed in T cell malignancies, such as T cell acute lymphoblastic leukemia (T-ALL). Targeting CD7 has therapeutic potential for treating T cell malignancies. Understanding CD7's roles in immune regulation and cancer biology is crucial for developing targeted therapies and diagnostic tools for T cell-related disorders.

#### Uniprot ID

P09564

### Synonyms

T-cell antigen CD7, GP40, T-cell leukemia antigen, T-cell surface antigen Leu-9, TP41

#### Sequence Note

Met1-Pro180

## Instruction

### Reconstitution

It is recommended to reconstitute the lyophilized protein in 4 mM HCl to a concentration not less than 200 µg/mL and incubate the stock solution for at least 20 min to ensure sufficient re-dissolved.

### Stability & Storage

This product is stable after storage at:

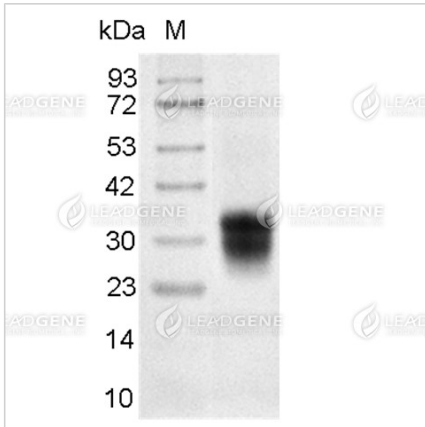
- -20°C for 12 months in lyophilized state from date of receipt.
- -20°C or -80°C for 1 month under sterile conditions after reconstitution.

Avoid repeated freeze/thaw cycles.

### Shipping

The product is shipped with polar packs. Upon receipt, store it immediately at -20°C or lower for long term storage.

Image



SDS-PAGE analysis of recombinant human CD7.

**Disclaimer :** For Research Use or Further Manufacturing Only.