

Human Metapneumovirus (MPV) Matrix Protein, His Tag, E. coli

Catalog Number LDG034PVE

Package 5 µg / 20 µg / 100 µg / Customized package

For full product information, images and publications, please visit [our website](#).



Specifications

Species of Origin

Human

Affinity Tag

His Tag (C-term)

Purity

>95% as determined by SDS-PAGE analysis.

Endotoxin Level

Not detected

Form

Lyophilized

Expression System

Escherichia coli

Storage Buffer

Lyophilized from a 0.2 µm filtered solution of PBS, pH 7.4

Molecular weight

The protein has a calculated MW of 28.42 kDa. The protein migrates as 27-33 kDa under reducing condition (SDS-PAGE analysis).

Mycoplasma

Not detected

Background

Tainan Headquarter

+886-6-2536677

bd@leadgene.com.tw

Innovation & Research Center

+886-2-27065528

CLD Center

+886-6-2536677

Background

Human Metapneumovirus (hMPV), a Paramyxoviridae family member, causes respiratory infections. The Matrix (M) protein is essential for viral assembly and budding, shaping virion morphology. X-ray crystallography revealed that hMPV M protein forms two dimers and has a high-affinity Ca²⁺ binding site, with a secondary lower-affinity site identified through molecular simulations. These sites stabilize M protein, and their conservation across human pneumoviruses suggests calcium's role in viral assembly.

Uniprot ID

Q6WB99

Synonyms

hMPV M Protein, Metapneumovirus M Protein Human, Metapneumovirus M Protein, Matrix Protein of hMPV, hMPV Matrix Protein, Paramyxovirus Matrix Protein, Metapneumovirus Structural Protein M

Instruction

Reconstitution

It is recommended to reconstitute the lyophilized protein in sterile H₂O to a concentration not less than 200 µg/mL and incubate the stock solution for at least 20 min to ensure sufficient re-dissolved.

Stability & Storage

This product is stable after storage at:

- -20°C for 12 months in lyophilized state from date of receipt.
- -20°C or -80°C for 1 month under sterile conditions after reconstitution.

Avoid repeated freeze/thaw cycles.

Shipping

The product is shipped with polar packs. Upon receipt, store it immediately at -20°C or lower for long term storage.

Image

Tainan Headquarter

+886-6-2536677

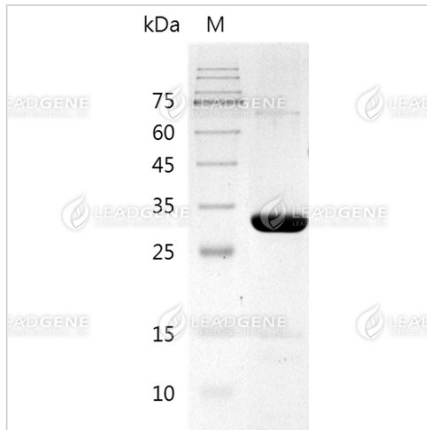
bd@leadgene.com.tw

Innovation & Research Center

+886-2-27065528

CLD Center

+886-6-2536677



SDS-PAGE analysis of recombinant human metapneumovirus (MPV) matrix protein.

Disclaimer : For Research Use or Further Manufacturing Only.