

## Human SLAMF7, His Tag, HEK293

<b>Catalog Number</b>	LDG040PHM
<b>Package</b>	5 µg / 20 µg / 100 µg / Customized package

For full product information, images and publications, please visit [our website](#).



### Specifications

#### Species of Origin

Human

#### Affinity Tag

His Tag (C-term)

#### Purity

>85% as determined by SDS-PAGE analysis.

#### Endotoxin Level

<0.1 EU per 1 µg of the protein by the LAL method.

#### Form

Lyophilized

#### Expression System

HEK293

#### Storage Buffer

Lyophilized from a 0.2 µm filtered solution of PBS, pH 7.4

#### Molecular weight

The protein has a calculated MW of 23.2 kDa.  
The protein migrates as 30-40 kDa under reducing condition (SDS-PAGE analysis).

#### Mycoplasma

Not detected

### Background

#### Tainan Headquarters

+886-6-2536677

bd@leadgene.com.tw

#### Innovation & Research Center

+886-2-27065528

#### CLD Center

+886-6-2536677

### Background

SLAMF7, or Signaling Lymphocytic Activation Molecule Family member 7, is a cell surface receptor protein primarily expressed on natural killer (NK) cells, a type of immune cell, as well as on certain subsets of T cells and dendritic cells. It plays a significant role in immune cell activation and regulation. SLAMF7 is involved in various cellular processes, including cell adhesion, cytokine production, and cytotoxicity. Its interaction with its ligand, SLAMF7, or CS1, mediates the activation of NK cells and promotes their cytotoxic function against target cells, such as tumor cells. Additionally, SLAMF7 has emerged as a promising target for immunotherapy in cancer treatment, with monoclonal antibody therapies specifically targeting SLAMF7 showing efficacy in multiple myeloma and other hematologic malignancies.

### Uniprot ID

GenBank: AAH27867.1

### Synonyms

CD2 subset 1, CD2-like receptor-activating cytotoxic cells (CRACC), Membrane protein FOAP-12, Novel Ly9, Protein 19A, CD319

### Sequence Note

Met1-Met226

## Instruction

### Reconstitution

It is recommended to reconstitute the lyophilized protein in 4 mM HCl to a concentration not less than 200 µg/mL and incubate the stock solution for at least 20 min to ensure sufficient re-dissolved.

### Stability & Storage

This product is stable after storage at:

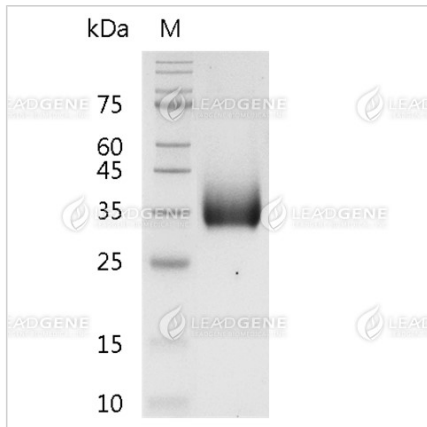
- -20°C for 12 months in lyophilized state from date of receipt.
- -20°C or -80°C for 1 month under sterile conditions after reconstitution.

Avoid repeated freeze/thaw cycles.

### Shipping

The product is shipped with polar packs. Upon receipt, store it immediately at -20°C or lower for long term storage.

## Image



SDS-PAGE analysis of recombinant human SLAMF7.

**Disclaimer :** For Research Use or Further Manufacturing Only.