

## Human IL-38, His Tag, E. coli

**Catalog Number** LDG043PHE

**Package** 5 µg / 20 µg / 100 µg / Customized package

For full product information, images and publications, please visit [our website](#).



### Specifications

#### Species of Origin

Human

#### Affinity Tag

His Tag (C-term)

#### Purity

>98% as determined by SDS-PAGE analysis.

#### Endotoxin Level

<0.1 EU per 1 µg of the protein by the LAL method.

#### Expression System

Escherichia coli

#### Storage Buffer

Lyophilized from a 0.2 µm filtered solution of PBS, pH 7.4.

#### Molecular weight

The protein has a calculated MW of 17.78 kDa. The protein migrates as 21 kDa under reducing condition (SDS-PAGE analysis).

#### Form

Lyophilized

### Background

#### Tainan Headquarter

+886-6-2536677

bd@leadgene.com.tw

#### Innovation & Research Center

+886-2-27065528

#### CLD Center

+886-6-2536677

### Background

Interleukin-38 (IL-38) is a member of the interleukin-1 cytokine family. IL-38 is a ligand for soluble IL-1 receptor type I (IL-1RI). IL-38 could block the IL-36 pathway by inhibiting the IL-36 cytokine binding to their receptor. This process shows that IL-38 has anti-inflammatory properties. IL-38 is expressed in the immune organs, specifically in the skin and the tonsil, indispensable for B cell proliferation.

### Uniprot ID

#Q8WWZ1

### Synonyms

Family of interleukin 1-theta, FIL1 theta, Interleukin-1 HY2, IL-1HY2, Interleukin-1 theta, IL-1 theta, Interleukin-38, IL-38, Interleukin-1 family member 10, IL-1F10

### Sequence Note

Met1-Trp152

## Instruction

### Reconstitution

It is recommended to reconstitute the lyophilized protein in sterile H<sub>2</sub>O to a concentration not less than 200 µg/mL and incubate the stock solution for at least 20 min to ensure sufficient re-dissolved.

### Stability & Storage

This product is stable after storage at:

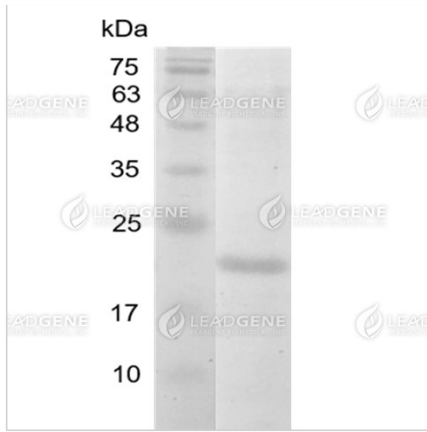
- -20°C for 12 months in lyophilized state from date of receipt.
- -20°C or -80°C for 1 month under sterile conditions after reconstitution.

Avoid repeated freeze/thaw cycles.

### Shipping

The product is shipped with polar packs. Upon receipt, store it immediately at -20°C or lower for long term storage.

## Image



SDS-PAGE analysis of  
recombinant human IL-38.

**Disclaimer :** For Research Use or Further Manufacturing Only.