

Human PGA5, His Tag, E. coli

Catalog Number LDG062PHE

Package 5 µg / 20 µg / 100 µg / Customized package

For full product information, images and publications, please visit [our website](#).



Specifications

Species of Origin

Human

Affinity Tag

His Tag (C-term)

Purity

>95% as determined by SDS-PAGE analysis.

Endotoxin Level

<0.1 EU per 1 µg of the protein by the LAL method.

Expression System

Escherichia coli

Storage Buffer

Lyophilized from a 0.2 µm filtered solution of PBS, pH 8.0.

Molecular weight

The protein has a calculated MW of 42.80 kDa. The protein migrates as 40-45 kDa under reducing condition (SDS-PAGE analysis).

Form

Lyophilized

Background

Tainan Headquarter

+886-6-2536677

bd@leadgene.com.tw

Innovation & Research Center

+886-2-27065528

CLD Center

+886-6-2536677

Background

Pepsinogen A5 (PGA5) is an aspartic protease secreted from gastric mucosa and located in the stomach. Pepsinogen A5 is a 41 kDa protein containing 388 amino acid residues. Pepsinogen A5 is a precursor protein of the digestive enzyme pepsin, which breaks down proteins into small chain peptides that are absorbed by the small intestine.

Uniprot ID

#P0DJD9

Synonyms

Pepsin A-5, Pepsinogen-5

Sequence Note

Met1-Ala388

Instruction

Reconstitution

It is recommended to reconstitute the lyophilized protein in sterile H₂O to a concentration not less than 200 µg/mL and incubate the stock solution for at least 20 min to ensure sufficient re-dissolution.

Stability & Storage

This product is stable after storage at:

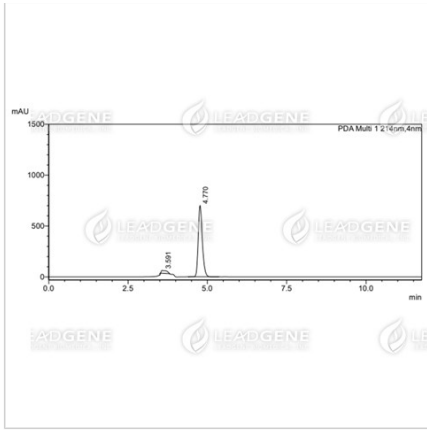
- -20°C for 12 months in lyophilized state from date of receipt.
- -20°C or -80°C for 1 month under sterile conditions after reconstitution.

Avoid repeated freeze/thaw cycles.

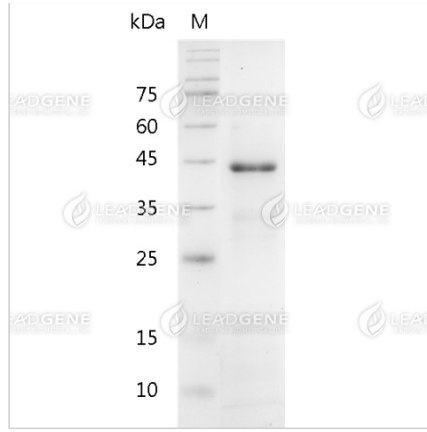
Shipping

The product is shipped with polar packs. Upon receipt, store it immediately at -20°C or lower for long term storage.

Image



The purity of recombinant human PGA5 is greater than 95% as determined by RP-HPLC.



SDS-PAGE analysis of recombinant human PGA5.

Disclaimer : For Research Use or Further Manufacturing Only.