

Human IL-1 beta, His Tag, CHO

Catalog Number LDG073PHM

Package 5 µg / 20 µg / 100 µg / Customized package

For full product information, images and publications, please visit [our website](#).



Specifications

Species of Origin

Human

Affinity Tag

His Tag (N-term)

Purity

>95% as determined by SDS-PAGE analysis.

Endotoxin Level

<0.1 EU per 1 µg of the protein by the LAL method.

Form

Lyophilized

Expression System

CHO

Storage Buffer

Lyophilized from a 0.2 µm filtered solution of PBS, pH 7.4.

Molecular weight

The protein has a calculated MW of 18.2 kDa. The protein migrates as 16-23 kDa under reducing condition (SDS-PAGE analysis).

Mycoplasma

Not detected.

Background

Tainan Headquarter

+886-6-2536677

bd@leadgene.com.tw

Innovation & Research Center

+886-2-27065528

CLD Center

+886-6-2536677

Background

Interleukin-1 Beta (IL-1 beta) is a key pro-inflammatory cytokine that mediates the body's response to infection and injury. It is involved in various inflammatory diseases, including rheumatoid arthritis and inflammatory bowel disease.

Uniprot ID

P01584

Synonyms

Interleukin-1 beta, Catabolin

Sequence Note

Ala117-Ser269

Instruction

Reconstitution

It is recommended to reconstitute the lyophilized protein in sterile H₂O to a concentration not less than 200 µg/mL and incubate the stock solution for at least 20 min to ensure sufficient re-dissolved.

Stability & Storage

This product is stable after storage at:

- -20°C for 12 months in lyophilized state from date of receipt.
 - -20°C or -80°C for 1 month under sterile conditions after reconstitution.
- Avoid repeated freeze/thaw cycles.

Shipping

The product is shipped with polar packs. Upon receipt, store it immediately at -20°C or lower for long term storage.

Image

Tainan Headquarter

+886-6-2536677

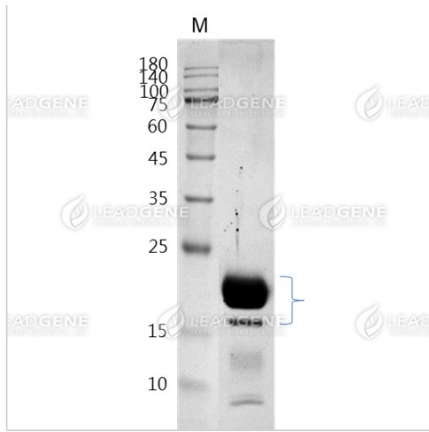
bd@leadgene.com.tw

Innovation & Research Center

+886-2-27065528

CLD Center

+886-6-2536677



SDS-PAGE analysis of
recombinant human IL-1 beta.

Disclaimer : For Research Use or Further Manufacturing Only.