

## Human FGF-13, His Tag, E. coli

**Catalog Number** LDG078PHE

**Package** 5 µg / 20 µg / 100 µg / Customized package

For full product information, images and publications, please visit [our website](#).



### Specifications

#### Species of Origin

Human

#### Affinity Tag

His Tag (C-term)

#### Purity

>98% as determined by SDS-PAGE analysis.

#### Activity

Measure by its ability to induce 3T3 cells proliferation. The ED<sub>50</sub> for this effect is <160 ng/mL.

#### Form

Lyophilized

#### Expression System

Escherichia coli

#### Storage Buffer

Lyophilized from a 0.2 µm filtered solution of PBS, pH 7.4.

#### Molecular weight

The protein has a calculated MW of 28.37 kDa. The protein migrates as 30 kDa under reducing condition (SDS-PAGE analysis).

#### Endotoxin Level

<0.1 EU per 1 µg of the protein by the LAL method.

### Background

#### Tainan Headquarter

+886-6-2536677

bd@leadgene.com.tw

#### Innovation & Research Center

+886-2-27065528

#### CLD Center

+886-6-2536677

### Background

Fibroblast Growth Factors-13 (FGF-13) is a 27.6 kDa member of the fibroblast Growth Factors with 245 amino acid residues. FGF-13 is mainly expressed from brain, parathyroid gland, skeletal muscle, tongue, neurons. FGF13 is a microtubule-stabilizing protein that regulates neuronal polarization and migration. May regulate voltage-gated sodium channels transport and function.

### Uniprot ID

# NP\_004105.1

### Synonyms

Fibroblast Growth Factors 13, Fibroblast Growth Factors homologous factor 2, FHF-2

### Sequence Note

Met1-Thr245

## Instruction

### Reconstitution

It is recommended to reconstitute the lyophilized protein in sterile H<sub>2</sub>O to a concentration not less than 200 µg/mL and incubate the stock solution for at least 20 min to ensure sufficient re-dissolved.

### Stability & Storage

This product is stable after storage at:

- -20°C for 12 months in lyophilized state from date of receipt.
- -20°C or -80°C for 2 weeks under sterile conditions after reconstitution.

Avoid repeated freeze/thaw cycles.

### Shipping

The product is shipped with polar packs. Upon receipt, store it immediately at -20°C or lower for long term storage.

## Image

### Tainan Headquarter

+886-6-2536677

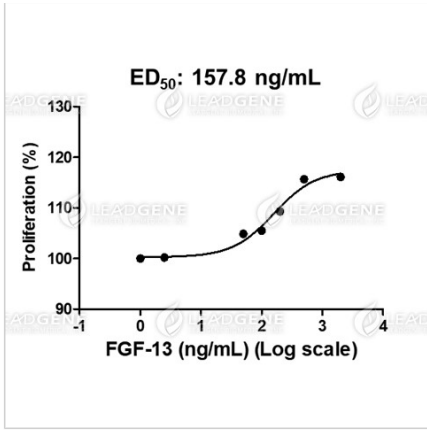
bd@leadgene.com.tw

### Innovation & Research Center

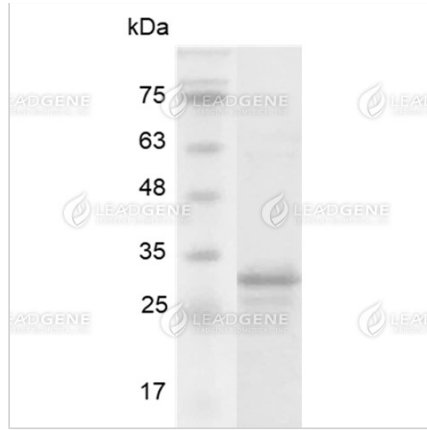
+886-2-27065528

### CLD Center

+886-6-2536677



Human FGF-13, His Tag, E. coli (LDG078PHE) induced 3T3 cell proliferation, with the ED<sub>50</sub> at 157.8 ng/mL.



SDS-PAGE analysis of recombinant human FGF-13.

**Disclaimer :** For Research Use or Further Manufacturing Only.