

Human FGF-21, His Tag, E. coli

Catalog Number LDG085PHE

Package 5 µg / 20 µg / 100 µg / Customized package

“ Publications (1)

For full product information, images and publications, please visit [our website](#).



Specifications

Species of Origin

Human

Affinity Tag

His Tag (C-term)

Purity

>98% as determined by SDS-PAGE analysis.

Activity

Measure by its ability to induce proliferation in BaF3 cells transfected with human FGFR111c. The ED₅₀ for this effect is <0.4 µg/mL.

Form

Lyophilized

Expression System

Escherichia coli

Storage Buffer

Lyophilized from a 0.2 µm filtered solution of PBS, pH 8.0.

Molecular weight

The protein has a calculated MW of 20.35 kDa. The protein migrates as 25 kDa under reducing condition (SDS-PAGE analysis).

Endotoxin Level

<0.1 EU per 1 µg of the protein by the LAL method.

Background

Tainan Headquarter

+886-6-2536677

bd@leadgene.com.tw

Innovation & Research Center

+886-2-27065528

CLD Center

+886-6-2536677

Background

Fibroblast Growth Factors-21 (FGF-21) is a 22.3 kDa member of the fibroblast Growth Factors with 209 amino acid residues. FGF-21 is expressed from liver and cardiomyocytes. FGF-21 is a key protein that regulates important metabolic pathways, and modulates cellular function, metabolism, and senescence. It can stimulate glucose uptake in differentiated adipocytes via the induction of glucose transporter SLC2A1 /GLUT1 expression.

Uniprot ID

#Q9NSA1

Synonyms

Fibroblast Growth Factors 21

Sequence Note

His29-Ser209

Instruction

Reconstitution

It is recommended to reconstitute the lyophilized protein in sterile H₂O to a concentration not less than 200 µg/mL and incubate the stock solution for at least 20 min to ensure sufficient re-dissolved.

Stability & Storage

This product is stable after storage at:

- -20°C for 12 months in lyophilized state from date of receipt.
- -20°C or -80°C for 1 month under sterile conditions after reconstitution.

Avoid repeated freeze/thaw cycles.

Shipping

The product is shipped with polar packs. Upon receipt, store it immediately at -20°C or lower for long term storage.

Image

Tainan Headquarter

+886-6-2536677

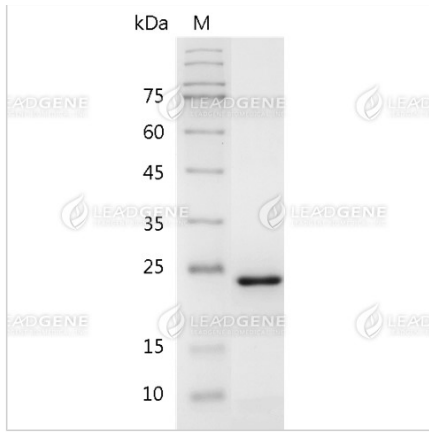
bd@leadgene.com.tw

Innovation & Research Center

+886-2-27065528

CLD Center

+886-6-2536677



SDS-PAGE analysis of
recombinant human FGF-21.

Disclaimer : For Research Use or Further Manufacturing Only.