

Human IGF-II, His Tag, E. coli

Catalog Number	LDG089PHE
Package	5 µg / 20 µg / 100 µg / Customized package

For full product information, images and publications, please visit [our website](#).



Specifications

Species of Origin

Human

Affinity Tag

His Tag (N-term)

Purity

>98% as determined by SDS-PAGE analysis.

Activity

Measure by its ability to induce MCF-7 cells proliferation. The ED₅₀ for this effect is <3 ng/mL. The specific activity of recombinant human IGF-II is > 3x 10⁵ IU/mg.

Form

Lyophilized

Expression System

Escherichia coli

Storage Buffer

Lyophilized from a 0.2 µm filtered solution of PBS, pH 8.0.

Molecular weight

The protein has a calculated MW of 8.28 kDa. The protein migrates as 11 kDa under reducing condition (SDS-PAGE analysis).

Endotoxin Level

<0.1 EU per 1 µg of the protein by the LAL method.

Background

Tainan Headquarter

+886-6-2536677

bd@leadgene.com.tw

Innovation & Research Center

+886-2-27065528

CLD Center

+886-6-2536677

Background

Insulin like Growth Factors 2 (IGF-II) is a 7.48 kDa member of the Insulin-like Growth Factors with 67 amino acid residues. IGF-II is mainly expressed from placenta, extravillous trophoblasts, leydig cells, syncytiotrophoblasts, cytotrophoblasts, peritubular cells. IGF-II regulating fetoplacental development and tissue differentiation. In adults, IGF-II signaling involves glucose metabolism in adipose tissue, skeletal muscle and liver. It also has important implications for metabolic disorders and cancer.

Uniprot ID

#P01344

Synonyms

Insulin-like Growth Factors II, Somatomedin-A, T3M-11-derived Growth Factors, Insulin-like Growth Factors II Ala-25 Del, Preptin

Sequence Note

Ala25-Glu91

Instruction

Reconstitution

It is recommended to reconstitute the lyophilized protein in sterile H₂O to a concentration not less than 200 µg/mL and incubate the stock solution for at least 20 min to ensure sufficient re-dissolved.

Stability & Storage

This product is stable after storage at:

- -20°C for 12 months in lyophilized state from date of receipt.
- -20°C or -80°C for 2 weeks under sterile conditions after reconstitution.

Avoid repeated freeze/thaw cycles.

Shipping

The product is shipped with polar packs. Upon receipt, store it immediately at -20°C or lower for long term storage.

Image

Tainan Headquarter

+886-6-2536677

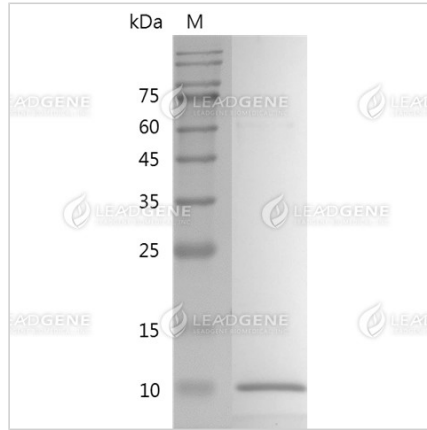
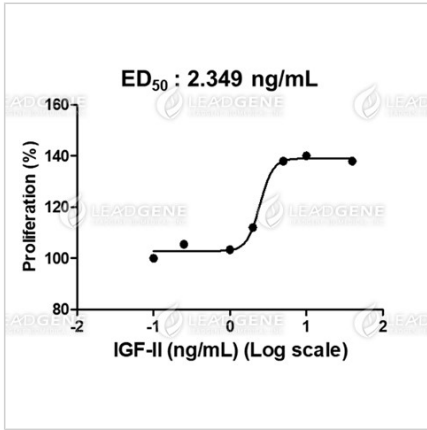
bd@leadgene.com.tw

Innovation & Research Center

+886-2-27065528

CLD Center

+886-6-2536677



Human IGF-II, His Tag, E. coli (LDG089PHE) induced MCF-7 cell proliferation, with the ED₅₀ at 2.349 ng/mL.

SDS-PAGE analysis of recombinant human IGF-II.

Disclaimer : For Research Use or Further Manufacturing Only.