

Mouse Beta-NGF, His Tag, E. coli

Catalog Number LDG090PME

Package 5 µg / 20 µg / 100 µg / Customized package

For full product information, images and publications, please visit [our website](#).



Specifications

Species of Origin

Mouse

Affinity Tag

His Tag (C-term)

Purity

>98% as determined by SDS-PAGE analysis.

Activity

Measure by its ability to induce TF-1 cells proliferation. The ED₅₀ for this effect is <1 ng/mL. The specific activity of recombinant mouse beta-NGF is > 1 x 10⁶ IU/mg.

Form

Lyophilized

Expression System

Escherichia coli

Storage Buffer

Lyophilized from a 0.2 µm filtered solution of PBS, pH 8.0.

Molecular weight

The protein has a calculated MW of 14.41 kDa. The protein migrates as 11-17 kDa under reducing condition (SDS-PAGE analysis).

Endotoxin Level

<0.1 EU per 1 µg of the protein by the LAL method.

Background

Tainan Headquarter

+886-6-2536677

bd@leadgene.com.tw

Innovation & Research Center

+886-2-27065528

CLD Center

+886-6-2536677

Background

Beta-Nerve Growth Factors (Beta-NGF) is a 27 kDa cytokine with 241 amino acid residues. Beta-NGF belongs to neurotrophin family, and acts as neurotrophic factors. It's composed of alpha, beta, gamma subunits, and the beta subunit is related to its biological activity. Beta-NGF binds to p75 neurotrophin receptor and Trk receptor and their function is about cell death and survival, respectively.

Uniprot ID

#P01139

Synonyms

Beta-nerve Growth Factors, Beta-NGF

Sequence Note

Ser122-Gly241

Instruction

Reconstitution

It is recommended to reconstitute the lyophilized protein in sterile H₂O to a concentration not less than 200 µg/mL and incubate the stock solution for at least 20 min to ensure sufficient re-dissolved.

Stability & Storage

This product is stable after storage at:

- -20°C for 12 months in lyophilized state from date of receipt.
- -20°C or -80°C for 1 month under sterile conditions after reconstitution.

Avoid repeated freeze/thaw cycles.

Shipping

The product is shipped with polar packs. Upon receipt, store it immediately at -20°C or lower for long term storage.

Image

Tainan Headquarter

+886-6-2536677

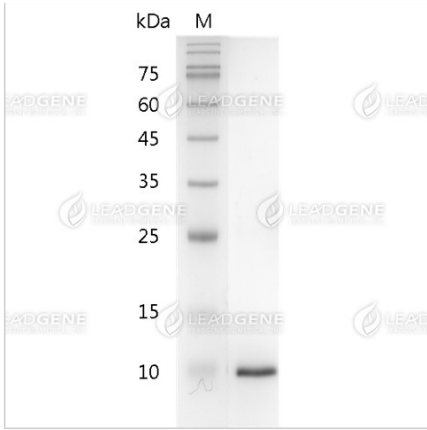
bd@leadgene.com.tw

Innovation & Research Center

+886-2-27065528

CLD Center

+886-6-2536677



SDS-PAGE analysis of recombinant mouse Beta-NGF.

Disclaimer : For Research Use or Further Manufacturing Only.