

Mouse PSCA, His Tag, E. coli

Catalog Number	LDG096PME
Package	5 µg / 20 µg / 100 µg / Customized package

For full product information, images and publications, please visit [our website](#).



Specifications

Species of Origin

Mouse

Affinity Tag

His Tag (C-term)

Purity

>95% as determined by SDS-PAGE analysis.

Endotoxin Level

<0.1 EU per 1 µg of the protein by the LAL method.

Expression System

Escherichia coli

Storage Buffer

Lyophilized from a 0.2 µm filtered solution of 50 mM Tris, 150 mM NaCl, 0.01% sarkosyl, pH 8.0

Molecular weight

The protein has a calculated MW of 9.3 kDa.

Form

Lyophilized

Background

Tainan Headquarter

+886-6-2536677

bd@leadgene.com.tw

Innovation & Research Center

+886-2-27065528

CLD Center

+886-6-2536677

Background

Prostate Stem Cell Antigen (PSCA) is a cell surface glycoprotein that is overexpressed in prostate cancer cells. PSCA plays a significant role in prostate cancer progression and metastasis by promoting tumor cell proliferation, invasion, and survival. It is also implicated in the modulation of signaling pathways involved in cell growth and apoptosis. Due to its specific expression in prostate cancer cells and its potential as a therapeutic target, PSCA has gained attention as a biomarker for prostate cancer diagnosis and prognosis. Moreover, PSCA-targeted therapies, such as monoclonal antibodies and antibody-drug conjugates, are being investigated for their efficacy in treating prostate cancer. Understanding the role of PSCA in prostate cancer biology is crucial for the development of novel diagnostic tools and therapeutic strategies for this prevalent malignancy.

Uniprot ID

P57096

Synonyms

Prostate stem cell antigen

Sequence Note

Met1-Asn95

Instruction

Reconstitution

It is recommended to reconstitute the lyophilized protein in sterile H₂O to a concentration not less than 200 µg/mL and incubate the stock solution for at least 20 min to ensure sufficient re-dissolved.

Shipping

The product is shipped with polar packs. Upon receipt, store it immediately at -20°C or lower for long term storage

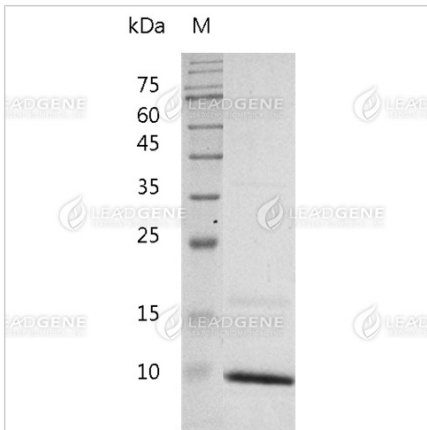
Stability & Storage

This product is stable after storage at:

- -20°C for 12 months in lyophilized state from date of receipt.
- -20°C or -80°C for 1 month under sterile conditions after reconstitution.

Avoid repeated freeze/thaw cycles.

Image



SDS-PAGE analysis of recombinant mouse PSCA protein.

Disclaimer : For Research Use or Further Manufacturing Only.