

## Human BMP-15, His Tag, E. coli

<b>Catalog Number</b>	LDG113PHE
<b>Package</b>	5 µg / 20 µg / 100 µg / Customized package

For full product information, images and publications, please visit [our website](#).



### Specifications

#### Species of Origin

Human

#### Affinity Tag

His Tag (C-term)

#### Purity

>98% as determined by SDS-PAGE analysis.

#### Activity

Measure by its ability to induce alkaline phosphatase production by ATDC5 cells. The ED<sub>50</sub> for this effect is <17 ng/mL.

#### Form

Lyophilized

#### Expression System

Escherichia coli

#### Storage Buffer

Lyophilized from a 0.2 µm filtered solution containing 20 mM sodium citrate and 0.2 M NaCl, pH 4.5.

#### Molecular weight

The protein has a calculated MW of 14.88 kDa. The protein migrates as 13-18 kDa under reducing condition (SDS-PAGE analysis).

#### Endotoxin Level

<0.1 EU per 1 µg of the protein by the LAL method.

### Background

#### Tainan Headquarter

+886-6-2536677

bd@leadgene.com.tw

#### Innovation & Research Center

+886-2-27065528

#### CLD Center

+886-6-2536677

### Background

Bone Morphogenetic Protein-15 (BMP-15) is an extracellular multifunctional signaling cytokine that is also a member of the TGF $\beta$  family. In the ovarian follicles, BMP-15 has a vital role in regulating the growth and maturation of follicles, the sensitivity of granulosa cells to FSH, and preventing granulosa cells from apoptosis. In addition, BMP-15 and GDF9 cooperate and have the same interaction on target cells.

### Uniprot ID

#O95972

### Synonyms

Growth/differentiation factor 9B, GDF-9B, Bone morphogenetic protein 15

### Sequence Note

Gln268-Arg392

## Instruction

### Reconstitution

It is recommended to reconstitute the lyophilized protein in 4 mM HCl to a concentration not less than 200  $\mu$ g/mL and incubate the stock solution for at least 20 min to ensure sufficient re-dissolved.

### Stability & Storage

This product is stable after storage at:

- -20°C for 12 months in lyophilized state from date of receipt.
- -20°C or -80°C for 1 month under sterile conditions after reconstitution.

Avoid repeated freeze/thaw cycles.

### Shipping

The product is shipped with polar packs. Upon receipt, store it immediately at -20°C or lower for long term storage.

## Image

### Tainan Headquarter

+886-6-2536677

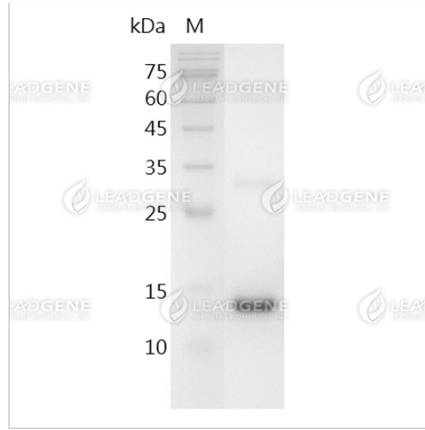
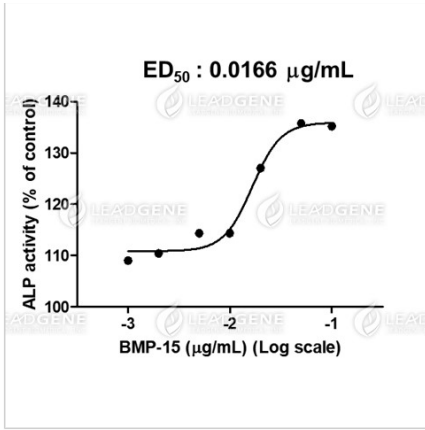
bd@leadgene.com.tw

### Innovation & Research Center

+886-2-27065528

### CLD Center

+886-6-2536677



Human BMP-15, His Tag, E. coli (LDG113PHE) induced alkaline phosphatase production by ATDC5 cells, with the ED<sub>50</sub> at 16.6 ng/mL.

SDS-PAGE analysis of recombinant human BMP-15.

**Disclaimer :** For Research Use or Further Manufacturing Only.