

Human BMP-16, His Tag, E. coli

| | |
|-----------------------|--|
| Catalog Number | LDG114PHE |
| Package | 5 µg / 20 µg / 100 µg / Customized package |

For full product information, images and publications, please visit [our website](#).



Specifications

Species of Origin

Human

Affinity Tag

His Tag (C-term)

Purity

>98% as determined by SDS-PAGE analysis.

Activity

Measure by its ability to induce alkaline phosphatase production by ATDC5 cells. The ED₅₀ for this effect is <2.2 ng/mL.

Form

Lyophilized

Expression System

Escherichia coli

Storage Buffer

Lyophilized from a 0.2 µm filtered solution containing 20 mM sodium citrate and 0.2 M NaCl, pH 4.5.

Molecular weight

The protein has a calculated MW of 13.75 kDa. The protein migrates as 10 kDa under reducing condition (SDS-PAGE analysis).

Endotoxin Level

<0.1 EU per 1 µg of the protein by the LAL method.

Background

Tainan Headquarter

+886-6-2536677

bd@leadgene.com.tw

Innovation & Research Center

+886-2-27065528

CLD Center

+886-6-2536677

Background

Bone morphogenetic protein 16 (BMP-16) predicts a molecular mass of 18 kDa. BMPs are multi-functional Growth Factors that belong to the transforming Growth Factors beta (TGF- β) superfamily. BMPs initiate signaling from the cell surface by binding to two different receptors (R: Type I and II). The heterodimeric formation of type I R and II R may occur before or after BMP binding, inducing signal transduction pathways through SMADs.

Uniprot ID

#Q96S42

Synonyms

Bone Morphogenetic Protein-16, BMP-16

Sequence Note

His238-Leu347

Instruction

Reconstitution

It is recommended to reconstitute the lyophilized protein in 4 mM HCl to a concentration not less than 200 μ g/mL and incubate the stock solution for at least 20 min to ensure sufficient re-dissolved.

Stability & Storage

This product is stable after storage at:

- -20°C for 12 months in lyophilized state from date of receipt.
- -20°C or -80°C for 1 month under sterile conditions after reconstitution.

Avoid repeated freeze/thaw cycles.

Shipping

The product is shipped with polar packs. Upon receipt, store it immediately at -20°C or lower for long term storage.

Image

Tainan Headquarter

+886-6-2536677

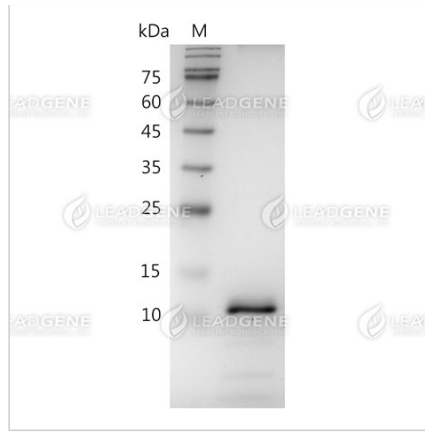
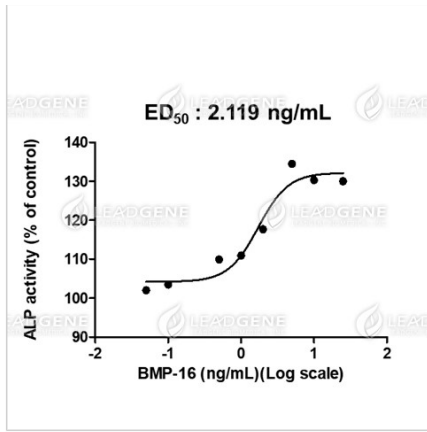
bd@leadgene.com.tw

Innovation & Research Center

+886-2-27065528

CLD Center

+886-6-2536677



Human BMP-16, His Tag, E. coli (LDG114PHE) induced alkaline phosphatase production by ATDC5 cells, with the ED₅₀ at 2.119 ng/mL.

SDS-PAGE analysis of recombinant human BMP-16.

Disclaimer : For Research Use or Further Manufacturing Only.