

Human CD40L, His Tag, E. coli

Catalog Number LDG116PHE

Package 5 µg / 20 µg / 100 µg / Customized package

For full product information, images and publications, please visit [our website](#).



Specifications

Species of Origin

Human

Affinity Tag

His Tag (C-term)

Purity

>95% as determined by SDS-PAGE analysis.

Activity

Measure by its ability to induce IL-8 secretion in human PBMCs. The ED₅₀ for this effect is <5 ng/mL.

Form

Lyophilized

Expression System

Escherichia coli

Storage Buffer

Lyophilized from a 0.2 µm filtered solution of PBS, pH 8.0.

Molecular weight

The protein has a calculated MW of 16.99 kDa. The protein migrates as 16 kDa under reducing condition (SDS-PAGE analysis).

Endotoxin Level

<0.1 EU per 1 µg of the protein by the LAL method.

Background

Tainan Headquarter

+886-6-2536677

bd@leadgene.com.tw

Innovation & Research Center

+886-2-27065528

CLD Center

+886-6-2536677

Background

Human CD40L (CD154) is one member of TNF family which is expressed on T cells. It binds the CD40, which is on the antigen-presenting cells (ex: B cells, macrophages and monocytes) Human CD40L is a 21.6 kDa cytokine with 103 amino acid residues which is a transmembrane glycoprotein. Human CD40L plays an important role in the adaptive immune system which induces the B cell maturation and activation.

Uniprot ID

#P29965

Synonyms

CD40 ligand, CD40L, T-cell antigen Gp39, TNF-related activation protein, TRAP, Tumor necrosis factor ligand superfamily member 5

Sequence Note

Met1-Leu261

Instruction

Reconstitution

It is recommended to reconstitute the lyophilized protein in sterile H₂O to a concentration not less than 200 µg/mL and incubate the stock solution for at least 20 min to ensure sufficient re-dissolved.

Stability & Storage

This product is stable after storage at:

- -20°C for 12 months in lyophilized state from date of receipt.
- -20°C or -80°C for 1 month under sterile conditions after reconstitution.

Avoid repeated freeze/thaw cycles.

Shipping

The product is shipped with polar packs. Upon receipt, store it immediately at -20°C or lower for long term storage.

Image

Tainan Headquarter

+886-6-2536677

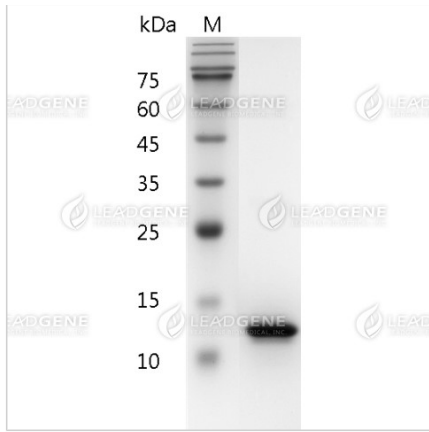
bd@leadgene.com.tw

Innovation & Research Center

+886-2-27065528

CLD Center

+886-6-2536677



SDS-PAGE analysis of
recombinant human CD40L.

Disclaimer : For Research Use or Further Manufacturing Only.