

Human Galectin-16, His Tag, E. coli

Catalog Number LDG151PHE

Package 5 µg / 20 µg / 100 µg / Customized package

For full product information, images and publications, please visit [our website](#).



Specifications

Species of Origin

Human

Affinity Tag

His Tag (N-term)

Purity

>98% as determined by SDS-PAGE analysis.

Endotoxin Level

<0.1 EU per 1 µg of the protein by the LAL method.

Expression System

Escherichia coli

Storage Buffer

Lyophilized from a 0.2 µm filtered solution of PBS, pH 7.4.

Molecular weight

The protein has a calculated MW of 17.4 kDa. The protein migrates as 18 kDa under reducing condition (SDS-PAGE analysis).

Form

Lyophilized

Background

Tainan Headquarter

+886-6-2536677

bd@leadgene.com.tw

Innovation & Research Center

+886-2-27065528

CLD Center

+886-6-2536677

Background

Galectin-16 (Gal-16) is a lectin family member and is one of the prototype galectins, but it exists as a monomer, and it is remarkably different from other prototype galectins in β -galactoside binding. Like galectin-13 and galectin-14, Galectin-16 is expressed in the placenta, contributing to T cell apoptosis, immune regulation, and immune tolerance, which is indispensable for fetal development. The molecular mechanism has been demonstrated that galectin-16 forms complex with c-Rel, suggesting galectin-16-activated signal transduction pathways via the c-Rel hub in B or T cells at the maternal-fetal interface.

Sequence Note

Ser2-Arg142

Uniprot ID

#A8MUM7

Instruction

Reconstitution

It is recommended to reconstitute the lyophilized protein in sterile H₂O to a concentration not less than 200 μ g/mL and incubate the stock solution for at least 20 min to ensure sufficient re-dissolved.

Stability & Storage

This product is stable after storage at:

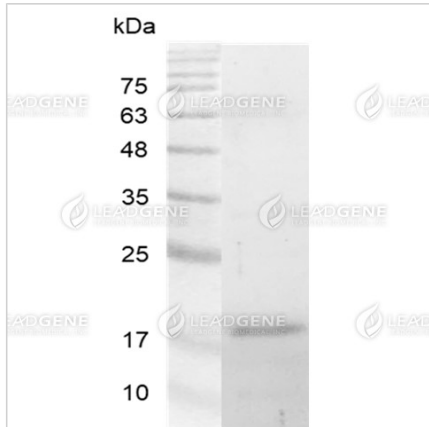
- -20°C for 12 months in lyophilized state from date of receipt.
- -20°C or -80°C for 1 month under sterile conditions after reconstitution.

Avoid repeated freeze/thaw cycles.

Shipping

The product is shipped with polar packs. Upon receipt, store it immediately at -20°C or lower for long term storage.

Image



SDS-PAGE analysis of recombinant human Galectin-16.

Disclaimer : For Research Use or Further Manufacturing Only.