

Human SCF, His Tag, E. coli

Catalog Number LDG173PHE

Package 5 µg / 20 µg / 100 µg / Customized package

For full product information, images and publications, please visit [our website](#).



Specifications

Species of Origin

Human

Affinity Tag

His Tag (C-term)

Purity

>98% as determined by SDS-PAGE analysis.

Activity

Measure by its ability to induce TF-1 cells proliferation. The ED₅₀ for this effect is <5 ng/mL. The specific activity of recombinant human SCF is > 5 x 10⁵ IU/mg.

Form

Lyophilized

Expression System

Escherichia coli

Storage Buffer

Lyophilized from a 0.2 µm filtered solution of PBS, pH 7.4.

Molecular Weight

The protein has a calculated MW of 19.4 kDa. The protein migrates as 21 kDa under reducing condition (SDS-PAGE analysis).

Endotoxin Level

<0.1 EU per 1 µg of the protein by the LAL method.

Background

Tainan Headquarter

+886-6-2536677

bd@leadgene.com.tw

Innovation & Research Center

+886-2-27065528

CLD Center

+886-6-2536677

Background

Stem Cell Factor (SCF) is a 166-amino-acid protein with a monomeric molecular weight of approximately 18.5 kDa. SCF is the ligand for the tyrosine kinase receptor c-kit, which regulates other Growth Factors, such as granulocyte colony-stimulating factor (G-CSF), granulocyte macrophage-colony-stimulating factor (GM-CSF), and interleukin-3 to stimulate proliferation, and differentiation of hematopoietic stem cells. SCF can be produced by a variety of cells, including fibroblasts, smooth muscle, endothelial cells, mast cells and bone marrow macrophages endothelial cells.

Uniprot ID

#P21583

Synonyms

Stem cell factor, Mast cell Growth Factors , MGF, c-Kit ligand, Kit ligand

Sequence Note

Glu26-Ala189

Instruction

Reconstitution

It is recommended to reconstitute the lyophilized protein in sterile H₂O to a concentration not less than 200 µg/mL and incubate the stock solution for at least 20 min to ensure sufficient re-dissolved.

Stability & Storage

This product is stable after storage at:

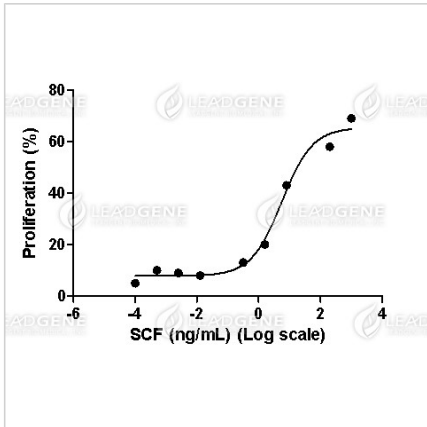
- -20°C for 12 months in lyophilized state from date of receipt.
- -20°C or -80°C for 1 month under sterile conditions after reconstitution.

Avoid repeated freeze/thaw cycles.

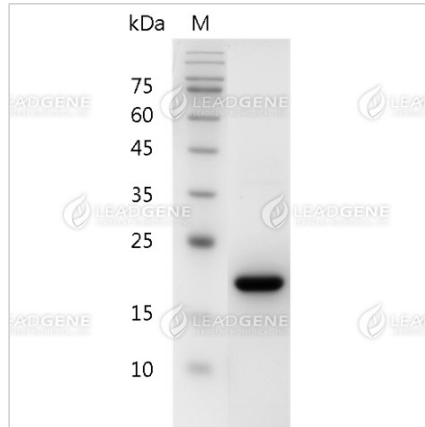
Shipping

The product is shipped with polar packs. Upon receipt, store it immediately at -20°C or lower for long term storage.

Image



Human SCF, His Tag, E. coli (LDG173PHE) induced TF-1 cell proliferation.



SDS-PAGE analysis of recombinant human SCF.

Disclaimer : For Research Use or Further Manufacturing Only.