

Human MTM1, His Tag, E. coli

Catalog Number LDG181PHE

Package 5 µg / 20 µg / 100 µg / Customized package

For full product information, images and publications, please visit [our website](#).



Specifications

Species of Origin

Human

Affinity Tag

His Tag (N-term)

Purity

>95% as determined by SDS-PAGE analysis.

Endotoxin Level

<1.0 EU per 1 µg of the protein by the LAL method.

Expression System

Escherichia coli

Storage Buffer

Lyophilized from a 0.2 µm filtered solution of PBS, pH 7.4.

Molecular weight

The protein has a calculated MW of 70.75 kDa. The protein migrates as 60 kDa under reducing condition (SDS-PAGE analysis).

Form

Lyophilized

Background

Tainan Headquarter

+886-6-2536677

bd@leadgene.com.tw

Innovation & Research Center

+886-2-27065528

CLD Center

+886-6-2536677

Background

Myotubularin is a protein that plays a crucial role in cellular processes and is primarily associated with a rare genetic disorder called myotubular myopathy (MTM). This disorder primarily affects skeletal muscles and is characterized by severe muscle weakness and impaired motor function.

Myotubularin is an enzyme that regulates the levels of a lipid molecule called phosphatidylinositol 3-phosphate (PI3P) within cells. PI3P is involved in various cellular functions, including membrane trafficking and signaling pathways. Mutations in the gene encoding myotubularin lead to a deficiency or loss of its enzymatic activity, disrupting PI3P metabolism and causing the development of MTM.

Uniprot ID

#Q13496

Synonyms

Phosphatidylinositol-3,5-bisphosphate 3-phosphatase, Phosphatidylinositol-3-phosphate phosphatase, CG2

Sequence Note

Met1-Phe603

Instruction

Reconstitution

It is recommended to reconstitute the lyophilized protein in sterile H₂O to a concentration not less than 200 µg/mL and incubate the stock solution for at least 20 min to ensure sufficient re-dissolved.

Shipping

The product is shipped with polar packs. Upon receipt, store it immediately at -20°C or lower for long term storage.

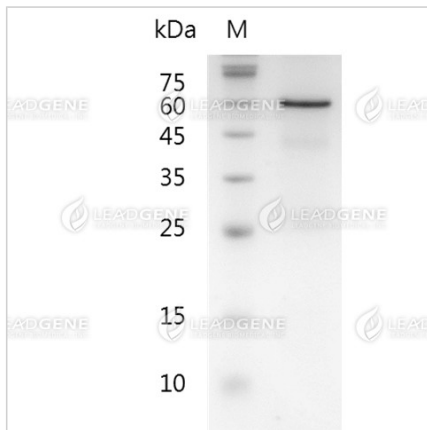
Stability & Storage

This product is stable after storage at:

- -20°C for 12 months in lyophilized state from date of receipt.
- -20°C or -80°C for 1 month under sterile conditions after reconstitution.

Avoid repeated freeze/thaw cycles.

Image



SDS-PAGE analysis of recombinant human MTM1.

Disclaimer : For Research Use or Further Manufacturing Only.