

## Human EGF, His Tag, E. coli

<b>Catalog Number</b>	LDG183PHE
<b>Package</b>	5 µg / 20 µg / 100 µg / 1 mg / Customized package

For full product information, images and publications, please visit [our website](#).



### Specifications

#### Species of Origin

Human

#### Affinity Tag

His Tag (C-term)

#### Purity

>95% as determined by SDS-PAGE analysis.

#### Activity

Measure by its ability to induce 3T3 cells proliferation. The ED<sub>50</sub> for this effect is < 1.0 ng/mL. The specific activity of recombinant human EGF is approximately >1.0 x 10<sup>6</sup> IU/mg.

#### Form

Lyophilized

#### Expression System

Escherichia coli

#### Storage Buffer

Lyophilized from a 0.2 µm filtered solution of PBS, pH 8.0.

#### Molecular weight

The protein has a calculated MW of 7.16 kDa. The protein migrates as 9-11 kDa under reducing condition (SDS-PAGE analysis).

#### Endotoxin Level

<0.1 EU per 1 µg of the protein by the LAL method.

### Background

#### Tainan Headquarter

+886-6-2536677

bd@leadgene.com.tw

#### Innovation & Research Center

+886-2-27065528

#### CLD Center

+886-6-2536677

### Background

Human epidermal Growth Factors (EGF) is a 6 kDa cytokine with 53 amino acid residues. EGF is mainly secreted from ectodermal cells, monocytes, kidney and duodenal glands. Upon binding to its receptor, EGFR, EGF acts to stimulate cell growth and proliferation of epithelial cells, play important roles in many developmental processes including accelerate tooth eruption, inhibits gastric acid secretion, and involve in wound healing.

### Uniprot ID

#P01133

### Synonyms

Epidermal Growth Factors, Urogastrone, URG

### Sequence Note

Asn971-Arg1023

## Instruction

### Reconstitution

It is recommended to reconstitute the lyophilized protein in sterile H<sub>2</sub>O to a concentration not less than 200 µg/mL and incubate the stock solution for at least 20 min to ensure sufficient re-dissolved.

### Stability & Storage

This product is stable after storage at:

- -20°C for 12 months in lyophilized state from date of receipt.
- -20°C or -80°C for 1 month under sterile conditions after reconstitution.

Avoid repeated freeze/thaw cycles.

### Shipping

The product is shipped with polar packs. Upon receipt, store it immediately at -20°C or lower for long term storage.

## Image

### Tainan Headquarter

+886-6-2536677

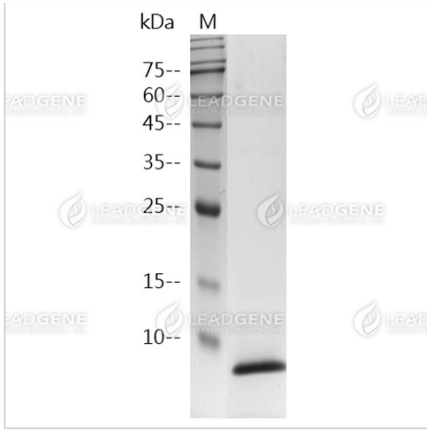
bd@leadgene.com.tw

### Innovation & Research Center

+886-2-27065528

### CLD Center

+886-6-2536677



SDS-PAGE analysis of recombinant human EGF.

**Disclaimer :** For Research Use or Further Manufacturing Only.