

## Anti-mCherry Antibody [Clone 45-5]

**Catalog Number** LDG0007YB

**Package** 100  $\mu$ L / Customized package

For full product information, images and publications, please visit [our website](#).



### Overview

#### Description

The mCherry protein is a basic red fluorescent protein derived from *Discosoma* sp. Leadgene mouse anti-mCherry mAb can recognize native and denature mCherry protein but not GFP.

#### Product Note

Recommended dilution factor:

ELISA: 1:5000-20000

WB: 1:1000-5000

IP: 1:500-2000

IFA: 1:500-1000

FACS: 1:500-1000

Note: Working dilution for specific application should be determined by the investigator to obtain the best conditions.

### Specifications

#### Host

Mouse

#### Isotype

IgG2a

#### Immunogen

Recombinant mCherry protein

#### Clonality

Monoclonal

#### Clone Name

clone 45-5

#### Application

ELISA, WB, IP, IFA, FACS

**Conjugation**

Unconjugated

**Buffer**

Phosphate Buffered Saline containing 0.03% ProClin 300, pH 7.4.

**Form**

Liquid

**Concentration**

1 mg/mL

**Specificity**

Recognizes mCherry but not GFP.

**Instruction****Shipping**

The product is shipped with polar packs. Upon receipt, store it immediately at -20°C or lower for long term storage.

**Stability & Storage**

This product is stable after storage at:

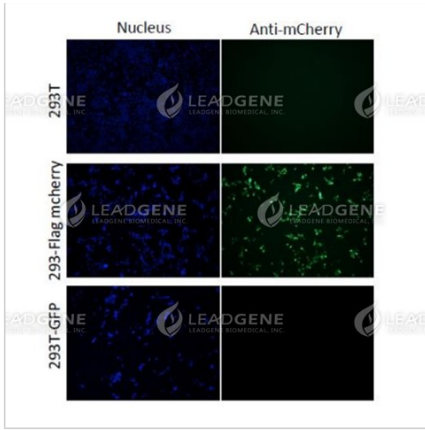
- 2-8°C for 2 weeks under sterile conditions from date of receipt.
- -20°C or -80°C for 12 months under sterile conditions from date of receipt.

Avoid repeated freeze/thaw cycles.

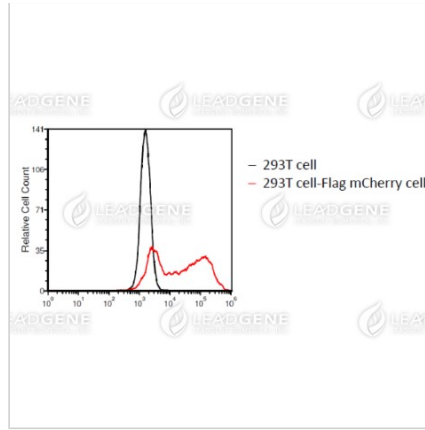
Suggestion: Divide antibody into several vials.

Keep only vials for usage at 2-8°C.

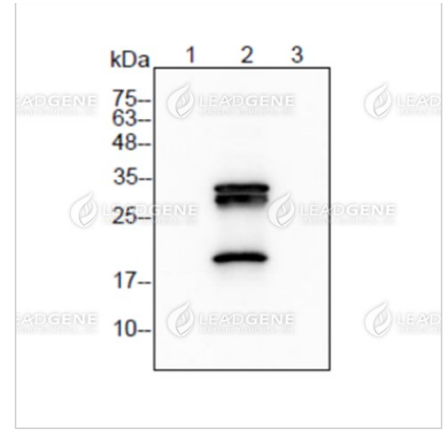
**Image**



Immunofluorescence analysis of anti-mCherry mAb (1:500)



Flow cytometry analysis of anti-mCherry mAb (1:1000)



Western blotting analysis of anti-mCherry mAb (1:2000)  
Lane 1: 293T cell lysate  
Lane 2: 293T-Flag mCherry cell lysate  
Lane 3: GFP fusion protein Lysate/protein at 6 µg per lane

**Disclaimer :** For Research Use or Further Manufacturing Only.