

Anti-ZIKV NS1 Antibody [Clone ZK243]

Catalog Number	LDG0016YA
Package	100 µg / 200 µg / Customized package

For full product information, images and publications, please visit [our website](#).



Overview

Description

Zika virus belongs to the family Flaviviridae, genus Flavivirus. Zika virus is transmitted primarily by mosquitos, but also can be transmitted through sexual, vertical, and blood transfusion. NS1 is a highly-conserved viral protein in flaviviruses. In infected patients, the concentration of NS1 protein in circulating blood is relatively high, and can be detected up to 5 days after the onset of illness.

Product Note

Recommended dilution factor:

ELISA: 1:5000-20000

WB: 1:1000-5000

IFA: 1:500-1000

FACS: Assay dependent

Note: Working dilution for specific application should be determined by the investigator to obtain the best conditions.

Specifications

Host

Mouse

Isotype

IgG2a

Immunogen

Zika virus NS1

Clonality

Monoclonal

Clone Name

clone ZK243

Reactivity

Zika virus

Tainan Headquarter

+886-6-2536677

bd@leadgene.com.tw

Innovation & Research Center

+886-2-27065528

CLD Center

+886-6-2536677

Application

ELISA, WB, IFA, FACS

Concentration

1 mg/mL

Specificity

NS1

Conjugation

Unconjugated

Buffer

Phosphate Buffered Saline containing 0.03% ProClin 300, pH 7.4.

Form

Liquid

Instruction**Shipping**

The product is shipped with polar packs. Upon receipt, store it immediately at -20°C or lower for long term storage.

Stability & Storage

This product is stable after storage at:

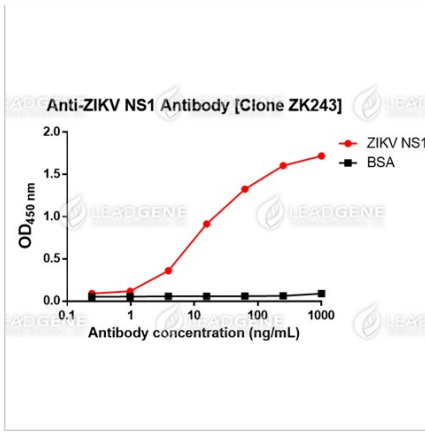
- 2-8°C for 2 weeks under sterile conditions from date of receipt.
- -20°C or -80°C for 12 months under sterile conditions from date of receipt.

Avoid repeated freeze/thaw cycles.

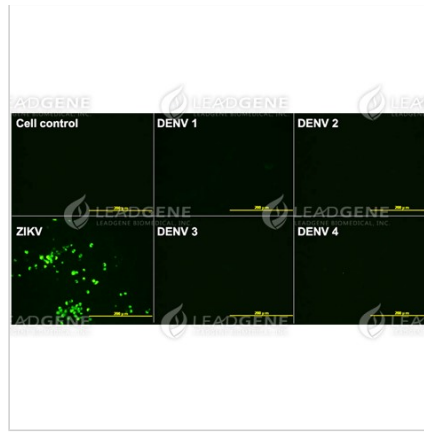
Suggestion: Divide antibody into several vials.

Keep only vials for usage at 2-8°C.

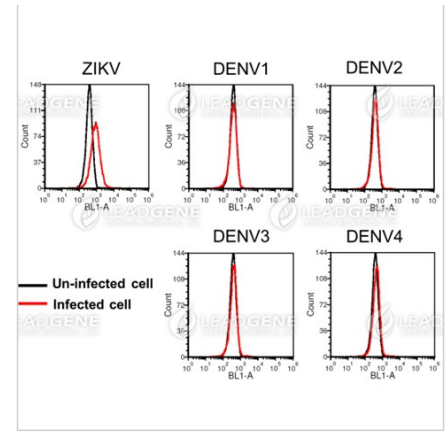
Image



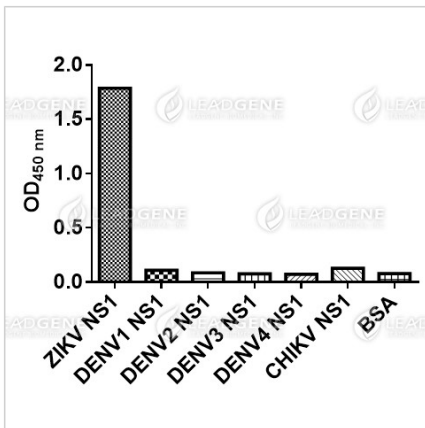
ELISA titration of Anti-ZIKV NS1 Antibody [Clone ZK243]
Titration curve of anti-ZIKV NS1 antibody in ELISA. Red: ZIKV NS1; Black: BSA (negative control).



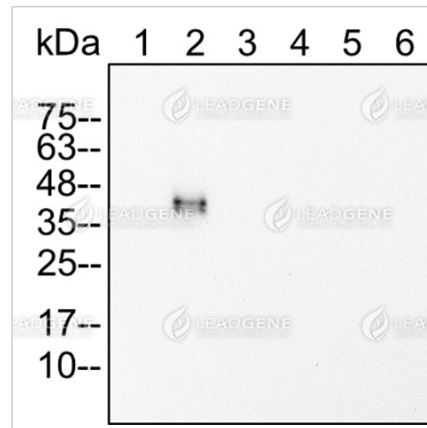
Immunofluorescence analysis of Anti-ZIKV NS1 Antibody [Clone ZK243]
ZIKV NS1 mAb (1:400) were used for detecting ZIKV NS1 in IFA. Scale bar: 200 μ m



FACS analysis of Anti-ZIKV NS1 Antibody [Clone ZK243]
ZIKV or DENV-infected Vero cells were stained with mouse anti-ZIKV NS1 monoclonal antibody at 5 μ g/mL (red) and without antibody control (black).



ELISA assay of Anti-ZIKV NS1 Antibody [Clone ZK243]
Indirect ELISA analysis was performed by coating a plate with recombinant NS1 protein of ZIKV, CHIKV or DENV and probing with anti-ZIKV NS1 Antibody.



Western blotting analysis of Anti-ZIKV NS1 Antibody [Clone ZK243]
Western blot: Virus infection Vero cell lysates were stained with mouse anti-ZIKV NS1 monoclonal antibody at 1:2000 dilution. Lane 1: Vero mock cell lysate (4 μ g), Lane 2: Vero ZIKV cell lysate (4 μ g), Lane 3: Vero DENV1 cell lysate (4 μ g), Lane 4: Vero DENV2 cell lysate (4 μ g), Lane 5: Vero DENV3 cell lysate (4 μ g), Lane 6: Vero DENV 4 cell lysate (4 μ g).

Disclaimer : For Research Use or Further Manufacturing Only.

Tainan Headquarter

+886-6-2536677

bd@leadgene.com.tw

Innovation & Research Center

+886-2-27065528

CLD Center

+886-6-2536677