

Anti-ZIKV E Antibody [Clone 125-1]

Catalog Number LDG0020YA

Package 100 µg / Customized package

For full product information, images and publications, please visit [our website](#).



Overview

Description

Zika virus belongs to the family Flaviviridae, genus Flavivirus. Zika virus is transmitted primarily by mosquitos, but also can be transmitted through sexual, vertical, and blood transfusion. The E protein is the major surface-exposed antigen of Zika virus, playing an key role in receptor binding during virus entry. This protein is the major target for neutralizing antibodies, and thus the focus of vaccine and anti-viral drug design.

Product Note

Recommended dilution factor:

ELISA: 1:5000-20000

WB: 1:1000-5000

IFA: 1:500-1000

FACS: Assay dependent

Note: Working dilution for specific application should be determined by the investigator to obtain the best conditions.

Specifications

Host

Mouse

Isotype

IgG1

Immunogen

Zika virus E

Clonality

Monoclonal

Clone Name

clone 125-1

Reactivity

Zika virus

Application

ELISA, WB, IFA

Concentration

1 mg/mL

Specificity

E (envelope) protein

Conjugation

Unconjugated

Buffer

Phosphate Buffered Saline containing 0.03% ProClin 300, pH 7.4.

Form

Liquid

Instruction**Shipping**

The product is shipped with polar packs. Upon receipt, store it immediately at -20°C or lower for long term storage.

Stability & Storage

This product is stable after storage at:

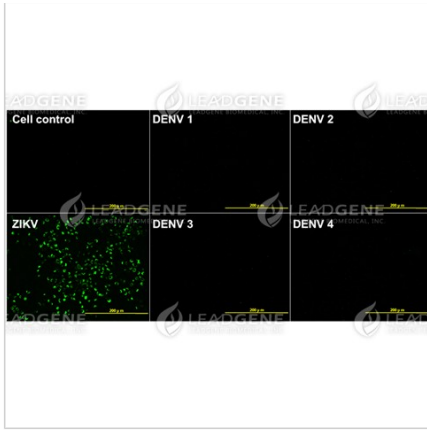
- 2-8°C for 2 weeks under sterile conditions from date of receipt.
- -20°C or -80°C for 12 months under sterile conditions from date of receipt.

Avoid repeated freeze/thaw cycles.

Suggestion: Divide antibody into several vials.

Keep only vials for usage at 2-8°C.

Image



Immunofluorescence analysis of
Anti-ZIKV E Antibody [Clone 125-
1]

ZIKV E mAb (1:400) were used for
detecting ZIKV E protein in IFA.

Scale bar: 200 μ m

Disclaimer : For Research Use or Further Manufacturing Only.