

Anti-IL-1 Beta Antibody [Clone 4-1]

Catalog Number	LDG0021YA
Package	100 µg / 200 µg / Customized package

For full product information, images and publications, please visit [our website](#).



Overview

Description

Interleukin-1 is a group of proteins mainly produced by leukocytes, regulates inflammation via controlling a variety of innate immune processes. Interleukin-1 beta (IL-1 beta), a member of the IL-1 family, is a pro-inflammatory cytokine produced by macrophages. This cytokine plays a crucial role for host-response to infection and injury, and also is an important factor in cytokine storms.

Product Note

Recommended dilution factor:

ELISA: 1:5000-20000

WB: 1:1000-5000

IFA: 1:200-1000

FACS: Assay dependent

Note: Working dilution for specific application should be determined by the investigator to obtain the best conditions.

Specifications

Host

Mouse

Isotype

IgG2a

Immunogen

Interleukin 1 beta

Clonality

Monoclonal

Clone Name

clone 4-1

Reactivity

Human

Tainan Headquarter

+886-6-2536677

bd@leadgene.com.tw

Innovation & Research Center

+886-2-27065528

CLD Center

+886-6-2536677

Application

ELISA, WB, IFA, FACS

Concentration

1 mg/mL

Specificity

Interleukin 1 beta

Conjugation

Unconjugated

Buffer

Phosphate Buffered Saline containing 0.03% ProClin 300, pH 7.4.

Form

Liquid

Instruction**Shipping**

The product is shipped with polar packs. Upon receipt, store it immediately at -20°C or lower for long term storage.

Stability & Storage




This product is stable after storage at:

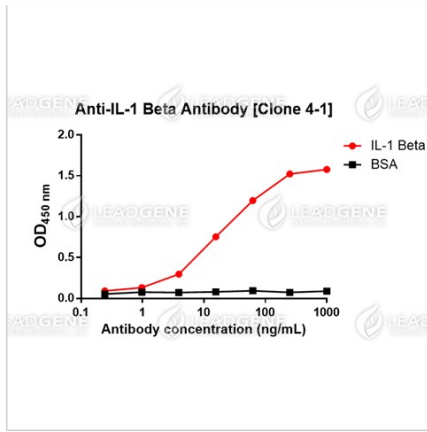
- 2-8°C for 2 weeks under sterile conditions from date of receipt.
- -20°C or -80°C for 12 months under sterile conditions from date of receipt.

Avoid repeated freeze/thaw cycles.

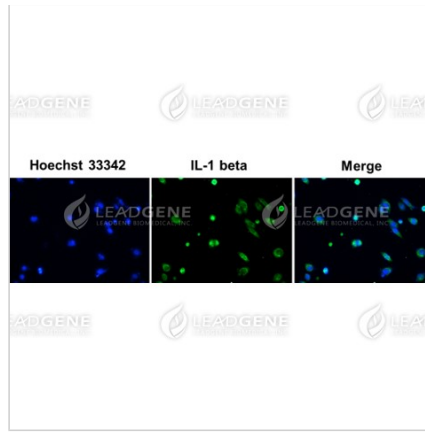
Suggestion: Divide antibody into several vials.

Keep only vials for usage at 2-8°C.

Image**Tainan Headquarter** +886-6-2536677 bd@leadgene.com.tw**Innovation & Research Center** +886-2-27065528**CLD Center** +886-6-2536677



ELISA titration of Anti-IL-1 Beta Antibody [Clone 4-1]
Titration curve of anti-IL-1 Beta antibody in ELISA. Red: IL-1 Beta; Black: BSA (negative control).



Immunofluorescence analysis of Anti-IL-1 beta Antibody [Clone 4-1]
HeLa cells were fixed in 4% PFA, permeabilized with PBS containing 0.1% Triton X-100. Cells were stained with mouse anti-IL-1 beta monoclonal antibody (1:200) followed by secondary antibodies (goat anti-Mouse IgG-iFluor 488, 1:400, green) and cell nuclei were stained with Hoechst 33342 (Blue).

Disclaimer : For Research Use or Further Manufacturing Only.