

## Anti-SARS-CoV-2 Spike Antibody [Clone LGSV201]

**Catalog Number** LDG0086YA

**Package** 100 µg / Customized package

For full product information, images and publications, please visit [our website](#).



### Overview

#### Description

Human anti-SARS-CoV-2 Spike Antibody [CR3022] recognizes human SARS-CoV and CoV-2 Spike protein with high affinity. The binding site is amino acids 318-510 (RBD, Receptor Binding Domain) in the S1 subunit of the spike protein. Coronavirus spike protein conducts the process that interacts with cellular receptor and membrane fusion to allow virus entering into target cells. Spike protein also can be used to define the specificity of the virus and be used as a critical target for vaccine design. The glycosylated spike protein can be detected in the virus-infected cell and cell culture medium. The RBD is responsible for recognizing the cell surface receptor.

#### Product Note

Recommended dilution factor:

ELISA: 1:5000-20000

WB:1: 1000-5000

IFA:1: 500-1000

FACS: Assay dependent

Note: Working dilution for specific application should be determined by the investigator to obtain the best conditions.

### Specifications

#### Host

Mouse

#### Isotype

IgG1

#### Clonality

Monoclonal

#### Clone Name

clone LGSV201

**Immunogen**

SARS-CoV-2 VLP

**Application**

ELISA, WB, IFA

**Concentration**

1 mg/mL

**Specificity**

Spike protein

**Reactivity**

SARS-CoV &amp; CoV-2

**Conjugation**

Unconjugated

**Buffer**

Phosphate Buffered Saline containing 0.03% ProClin 300, pH 7.4.

**Form**

Liquid

**Instruction****Shipping**

The product is shipped with polar packs. Upon receipt, store it immediately at -20°C or lower for long term storage.

**Stability & Storage**




This product is stable after storage at:

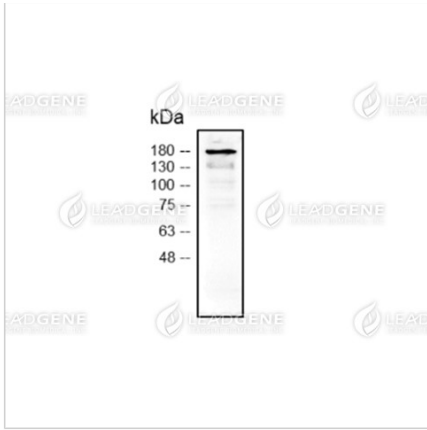
- 2-8°C for 2 weeks under sterile conditions from date of receipt.
- -20°C or -80°C for 12 months under sterile conditions from date of receipt.

Avoid repeated freeze/thaw cycles.

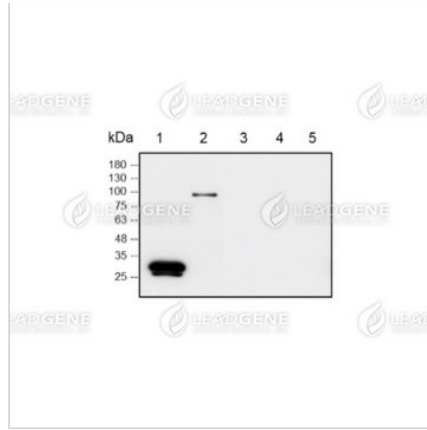
Suggestion: Divide antibody into several vials.

Keep only vials for usage at 2-8°C.

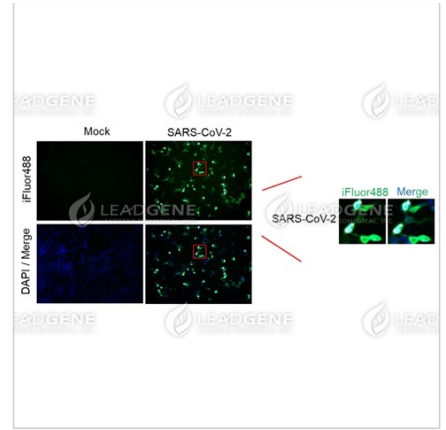
**Image****Tainan Headquarter** +886-6-2536677 [bd@leadgene.com.tw](mailto:bd@leadgene.com.tw)**Innovation & Research Center** +886-2-27065528**CLD Center** +886-6-2536677



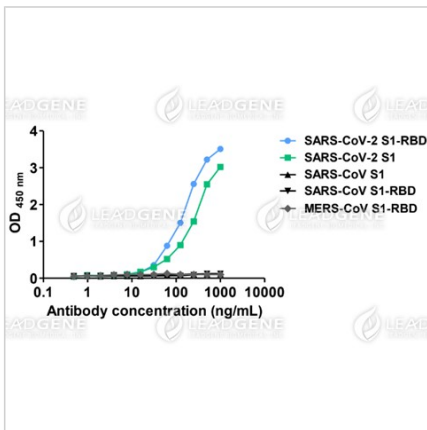
Western blotting analysis of Mouse anti-SARS-CoV-2 Spike mAb (1:5000)  
Lane: SARS-CoV-2 VLP



LDG0086YAWB01 Western blotting analysis of Mouse anti-SARS-CoV-2 Spike mAb (1:5000)  
Lane 1: SARS-CoV-2 S1-RBD  
Lane 2: SARS-CoV-2 S1  
Lane 3: SARS-CoV S1-RBD  
Lane 4: SARS-CoV S1  
Lane 5: MERS-CoV S1-RBD



Immunofluorescence analysis of Mouse anti-SARS-CoV-2 Spike mAb (1:1000)



ELISA titration of Mouse anti-SARS-CoV-2 Spike mAb

**Disclaimer :** For Research Use or Further Manufacturing Only.